

# JACQUELINE RABUN

## A RETROSPECTIVE

LONDON | 20 SEPTEMBER – 18 NOVEMBER 2023





Carpenters Workshop Gallery presents a retrospective of the works of African American jewellery artist Jacqueline Rabun.

The exhibition is a visual narration of Rabun's principal objective: to explore the singular and collective emotional landscapes that mark life's journey via wearable art. Drawings sit alongside archival photographs and the finished pieces in a carefully considered distillation of her design language and artistic intentions.

From her inaugural Raw Elegance series of 1990, which dared to articulate the percolating subcultures that were the bedrock of London's creative renaissance in bold, organic and predominantly silver jewellery, through to her much-lauded Metanoia series, designed exclusively for Carpenters Workshop Gallery in 2021 that explores the duality of change being a dance between strength and fragility and is poetically evoked in sculptural forms crafted in precious metals and gemstones, we journey with an artist who possesses a sensitivity for expressing what she believes to be true.

Rabun's career can also be viewed as a meditation on minimalism that is rooted in a multiplicity of spaces and places. Her body of work, both in collaboration with international heritage houses and in her own practice, touches on themes seen in African and Scandinavian art, and how each piece relates to the body and the wearer's soul are constant companions in her design thesis and processes. Los Angeles and London are both home and canvas of inspiration.

2021 – 22

## A BEAUTIFUL LIFE

An elegant symbol of the beauty of balance in one's life. The ring and meditation pendant both embrace a hand carved gemstone, allowing the wearer to hold for comfort during moments of stillness and contemplation.





JACQUELINE RABUN

A BEAUTIFUL LIFE | RING  
2022

18K Yellow Gold and Rutilated Quartz  
4.0 x 2.5 x 1.0 cm

This Beautiful Life ring design was developed in 2022,  
following on from the original 2019 design.

The ring comprises of two parts; an 18k yellow gold  
case, with a removable hand carved gemstone ring.  
Allowing the wearer to hold for comfort during moments  
of stilness.





JACQUELINE RABUN

A BEAUTIFUL LIFE | RING  
2019

18k Yellow Gold, Rutilated Quartz  
3.5 x 2.7 x 3.0 cm

An elegant symbol of the beauty of balance in one's life. The Beautiful ring comprises three movable parts that unite to create a single organic form.

The two outer forms are separated by a slender central ring signifying the importance of offering space and compassion in all relationships.



JACQUELINE RABUN

A BEAUTIFUL LIFE | PENDANT SMALL  
2019

18k Yellow Gold, Rutiled Quartz  
6.0 x 5.0 x 1.3 cm

The meditation pendant embraces a sculptural hand carved gemstone which can be removed and held for comfort during moments of stillness and contemplation.







2021

## METANOIA

Jacqueline Rabun's Metanoia series is charged with emotion. The artist leads the wearer on a journey of transformation, crystallising changes of heart or mind in the mesmerising jewellery.

The term metanoia is commonly understood as spiritual conversion. Rabun empathises with our desires to lead more meaningful lives, choosing the smoky rutilated quartz as a mirror to modern life - its smoky insides echo life's vagaries, its penetrating shards of golden rutile represent our innermost conflicts. Set into 18k gold, the oval shapes of each crystal are windows into the soul, exposing the complexity and beauty of our inner worlds.

The contrast of pure metal against the fractured quartz prompts self-reflection in the wearer, inducing the spiritual reawakening the series intends.





JACQUELINE RABUN

METANOIA | TORQUE GOLD  
2021

18k Yellow Gold, Rutilated Quartz  
Torque: 13.5 cm diameter  
Pendant: 12.6 x 5.9 x 2.2 cm  
Edition of 10 + 2 AP

Jacqueline Rabun's Metanoia Torque Gold series is charged with emotion. The artist leads the wearer on a journey of transformation, crystallising changes of heart or mind in the hypnotic pendant.

The necklace of Metanoia Torque Gold can be made in any size. Please request any alterations.



JACQUELINE RABUN

METANOIA | RING GOLD  
2021

18K Gold, Rutilated Quartz  
3.2 x 32.1 x 4.8 cm  
Edition of 10 + 2 AP





JACQUELINE RABUN

METANOIA | RING SILVER  
2021

Silver, Rutilated Quartz  
3.2 x 3.1 x 4.8 cm  
Edition of 10 + 2 AP





2016

## A LINE OF LOVE

A Line of Love is a self-forming bracelet created in collaboration with Studiomama. A flexible bracelet to wrap around your wrist or the wrist of friend or loved one, it is an elevated iteration of a friendship bracelet.



JACQUELINE RABUN

A LINE OF LOVE | BRACELET GOLD  
2016

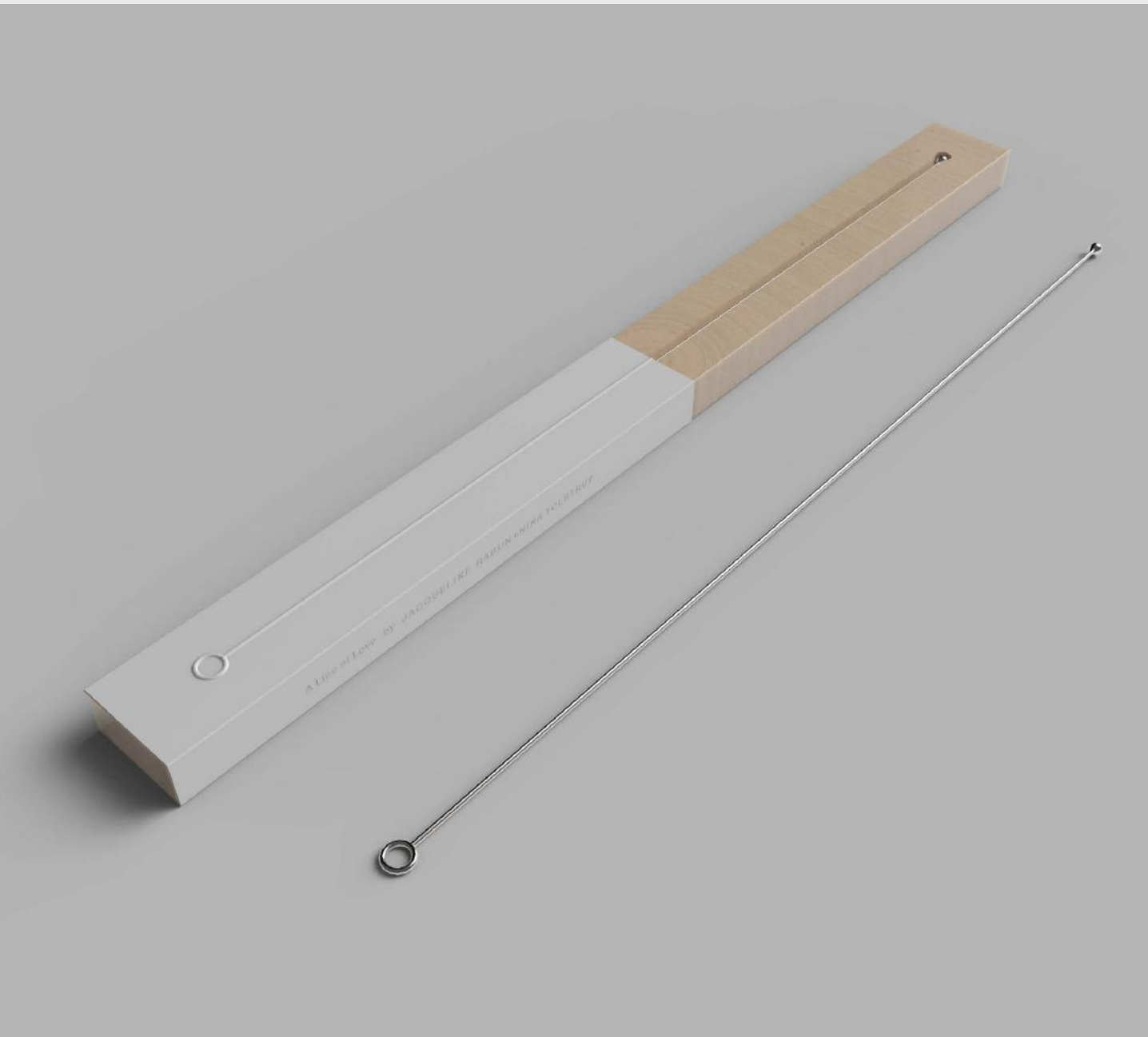
18k Yellow Gold  
Length: 24.0 cm



JACQUELINE RABUN

A LINE OF LOVE | BRACELET SILVER  
2016

Sterling Silver  
Length: 24.0 cm





2015

BLACK  
LOVE

Two seeds symbolising transformation and change come together to delicately form a sculptural heart symbol, a talisman illustrating the beauty, elegance and grace of the heart of those who stand for love, justice and equality.



JACQUELINE RABUN

BLACK LOVE | PENDANT LARGE  
2015

Sterling Silver, Black Rhodium  
2.5 x 2.5 cm  
Chain Length: 65.0 cm



JACQUELINE RABUN

BLACK LOVE | PENDANT LARGE  
2015

Sterling Silver  
2.5 x 2.5 cm  
Chain Length: 65.0 cm



JACQUELINE RABUN

BLACK LOVE | PENDANT LARGE  
2015

18k Yellow Gold  
2.5 x 2.5 cm  
Chain Length: 65.0 cm



JACQUELINE RABUN

BLACK LOVE | RING GOLD LARGE  
2015

18k Yellow Gold  
2.5 x 2.5 cm





2011

LOVE  
DISTANCE

Love Distance is a ring to share with someone close to your heart, or it can also be worn as a stacking finger ring. The wave between the two rings is a symbol of eternal love, a comfort when you are apart from one another.



JACQUELINE RABUN

LOVE DISTANCE | RING SILVER  
2011

Sterling Silver  
2.5 x 2.5 x 0.6 cm



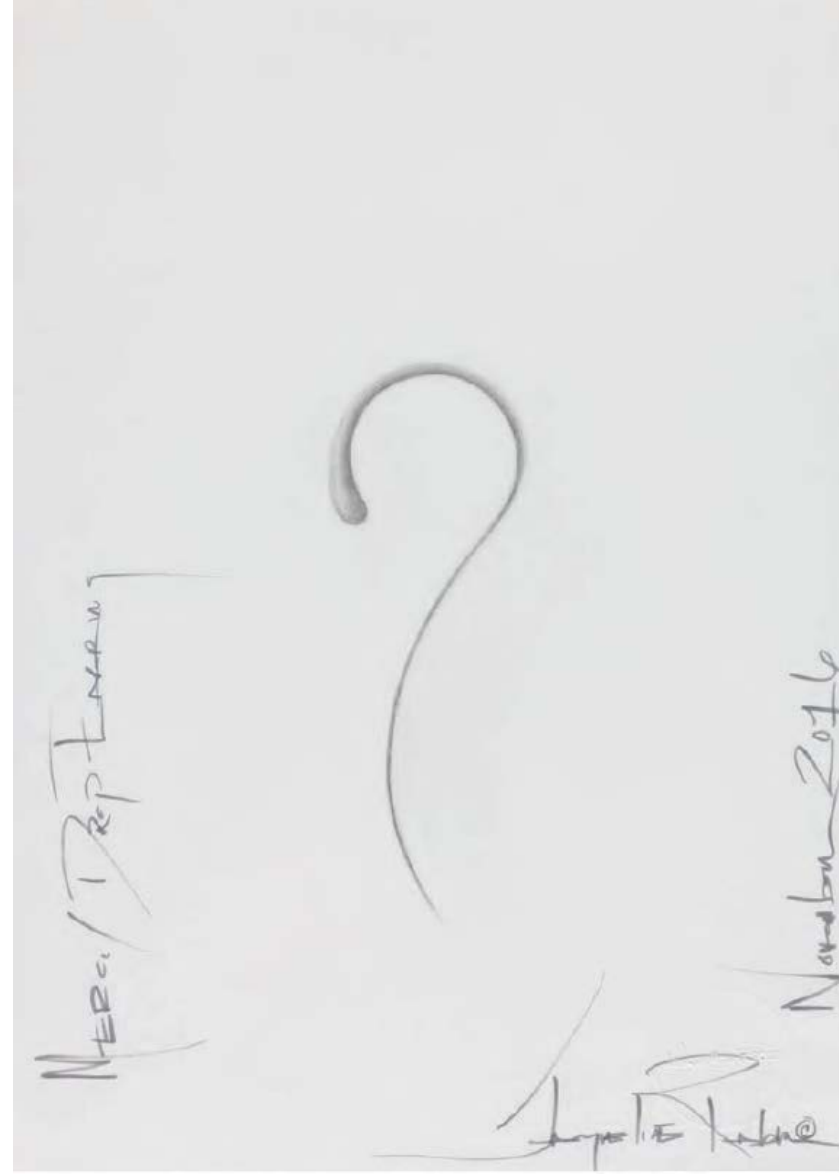
JACQUELINE RABUN

LOVE DISTANCE | RING GOLD  
2011

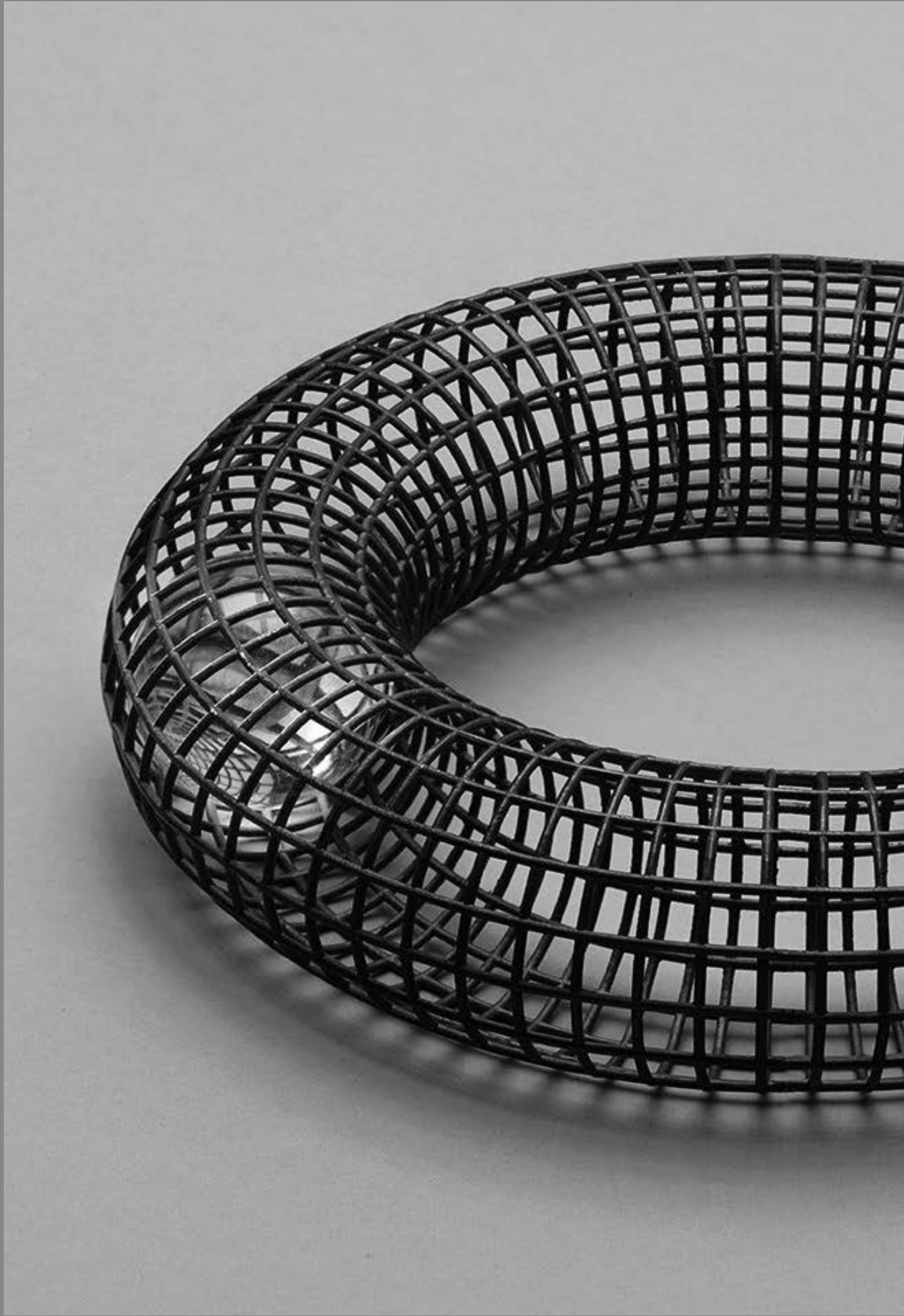
18k Yellow Gold and 18k White Gold  
2.5 x 2.5 x 0.6 cm











2009

GRACE

The Grace collection encases a free moving Brilliant cut solitaire diamond with a delicate geometric 18k yellow gold grid, exploring the beauty and balance of discipline and freedom.

The Grace Round collection encases a free moving quartz crystal sphere wich contrasts with it's oxidised silver geometric enclosure, exploring the beauty and balance of discipline and freedom.

Grace Fluid is an elegant and delicate collection that extends Jacqueline's play with geometric patterns and shape, the supple necklace and bracelet gently drape the body when worn and create a structured grid patter when not worn.



JACQUELINE RABUN

GRACE | RING  
2009

Sterling Silver, Black Rhodium  
4.4 x 2.9 x 2.4 cm



JACQUELINE RABUN

GRACE | PENDANT LARGE  
2009

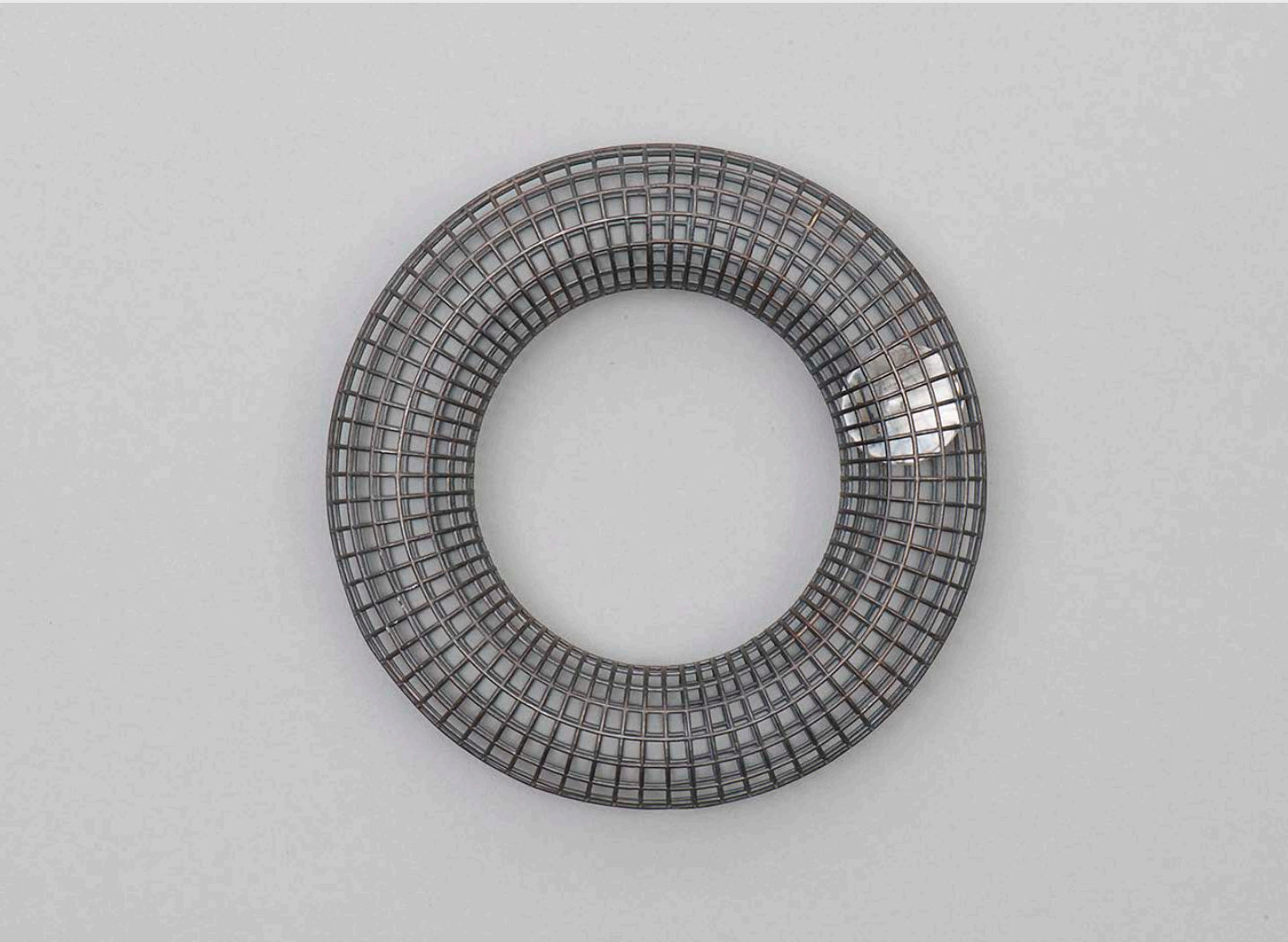
Sterling Silver, Black Rhodium  
Outside Diameter: 12.0cm  
Interior Diameter: 6.5cm



JACQUELINE RABUN

GRACE | BANGLE  
2009

Sterling Silver, Black Rhodium  
12.0 x 6.5 cm



JACQUELINE RABUN

GRACE | RING  
2009

18k Yellow Gold  
2.0 x 2.0 cm



JACQUELINE RABUN

GRACE | PENDANT  
2009

18k Yellow Gold  
1.0 x 1.0 cm  
Chain: 67.5 cm





JACQUELINE RABUN

GRACE | BANGLE  
2009

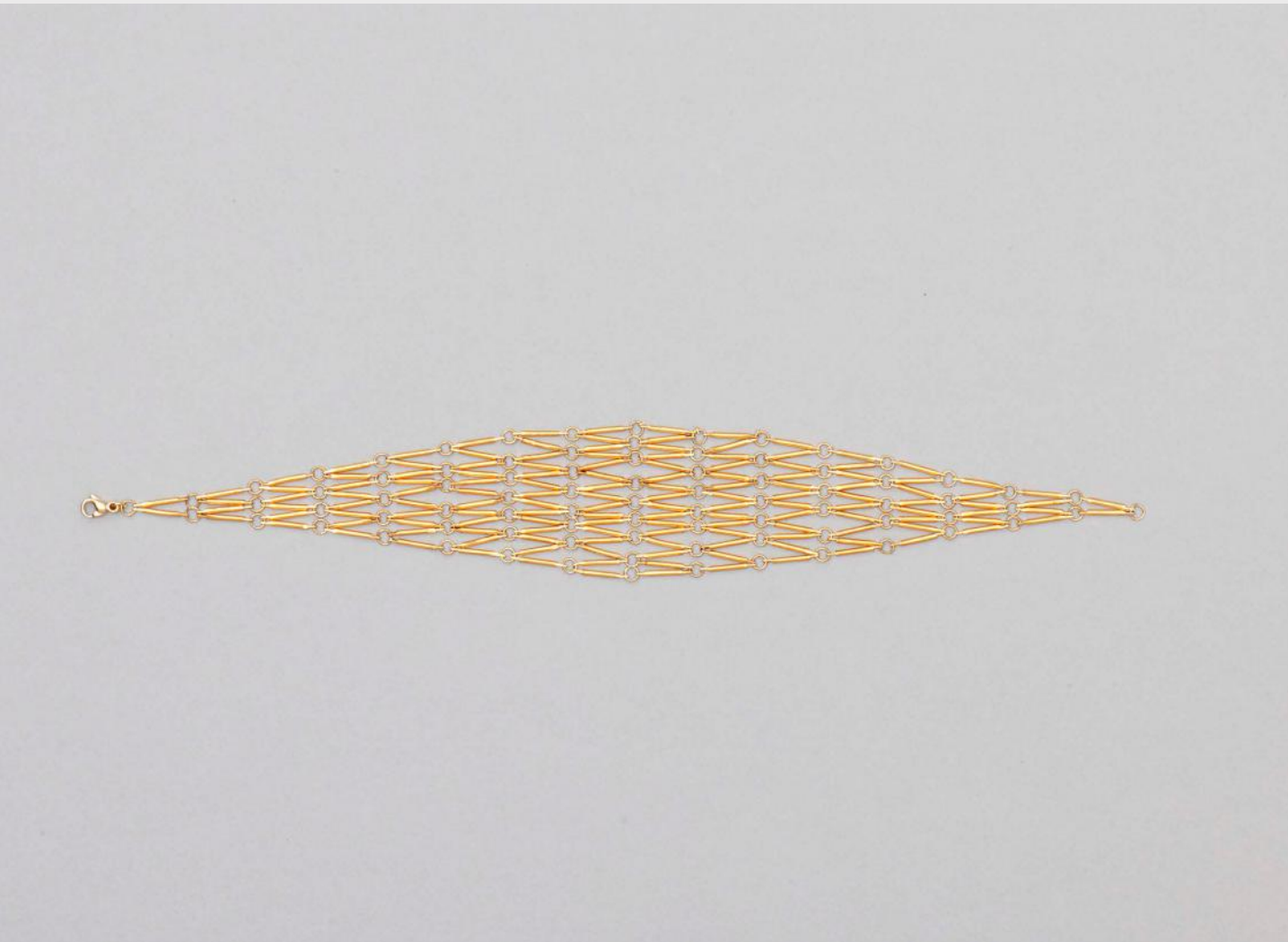
18k Yellow Gold  
Inside Diagonal: 7.5 x 7.5 cm



JACQUELINE RABUN

GRACE | FLUID BRACLET LARGE  
2009

18k Yellow Gold  
20 x 0.2 cm





2007

CAVE

Cave is a journey through the inner world, a special place for meditation and contemplation where one celebrates and confronts life.

JACQUELINE RABUN

CAVE | RING GOLD WITH PAVE DIAMONDS  
2007

18k Yellow Gold, Diamonds  
2.5 x 2.6 x 2.5 cm



JACQUELINE RABUN

CAVE | CHARM RING SMALL WITH PAVE DIAMONDS  
2007

18k Yellow Gold, Diamonds  
Charm Diameter: 1.0 cm  
Ring Diameter: 1.59 cm





2007

LOOK &  
OPEN

Inspired by the shape of Jacqueline's son's eye,  
mirroring the purity of a child's intuitive mind.



JACQUELINE RABUN

LOOK & OPEN | LOOK MAGNIFYING GLASS PENDANT  
2007

Sterling Silver  
10.5 x 3.4 x 0.4 cm  
Chain: 67.5 cm



JACQUELINE RABUN

LOOK & OPEN | LOOK MAGNIFYING GLASS  
2007

Sterling Silver  
10.5 x 3.4 x 0.4 cm  
Handle Length: 6.0 cm





2002

## BEAUTIFUL

The Beautiful collection symbolizes the balance between individuality and unity found in relationships. Each design comprises three movable parts that join to create a single unified form.

The contrasting matt and polished finishes of the rounded outer parts are separated by a slender central section signifying the importance of personal space in a partnership.

JACQUELINE RABUN

BEAUTIFUL | STATEMENT RING  
2002

Sterling Silver  
3.5 x 2.7 x 3.0 cm



JACQUELINE RABUN

BEAUTIFUL | BANGLE  
2002

Sterling Silver  
6.5 x 4.0 x 1.5 cm





JACQUELINE RABUN

BEAUTIFUL | BANGLE  
2002

18k Yellow Gold, 18k White Gold  
with Brilliant Cut Diamonds  
6.8 x 8.0 x 1.5 cm



JACQUELINE RABUN

BEAUTIFUL | RING SMALL  
2002

18k Yellow Gold, 18k White Gold  
with Brilliant Cut Diamonds  
2.5 x 0.6 cm





1990 – 95

RAW  
ELEGANCE

Designed in the early 90's, Rabun's debut collection was inspired by the beauty and Individuality amongst London's multicultural society and subcultures-expressed through the use of raw, organic, hand sculpted forms.

JACQUELINE RABUN

RAW ELEGANCE | ROUND RING LARGE  
1990-95

Sterling Silver  
2.5 x 2.5 x 1.3 cm



JACQUELINE RABUN

RAW ELEGANCE | ID BRACELET  
1990-95

Sterling Silver  
19 x 1.3 x 0.4 cm





JACQUELINE RABUN

RAW ELEGANCE | ROUND BANGLE  
1990-95

Sterling Silver  
7.0 x 7 x 0.4 cm



JACQUELINE RABUN

RAW ELEGANCE | ROUND RING SMALL  
1990-95

Sterling Silver  
2.0 x 2.0 x 0.2 cm



JACQUELINE RABUN

RAW ELEGANCE | LINK BRACLET  
1990–95

Sterling Silver  
1.8 x 0.1 x 0.4 cm



JACQUELINE RABUN

RAW ELEGANCE | RING WITH GEMSTONE  
1990–95

Sterling Silver  
Height: 1.2 cm





JACQUELINE RABUN

RAW ELEGANCE | BEAD NECKLACE  
1990-95

Sterling Silver  
37.5 x 0.5 x 0.5 cm



JACQUELINE RABUN

RAW ELEGANCE | TORQUE  
1990-95

Sterling Silver  
1.4 x 1.3 x 0.5 cm





JACQUELINE RABUN

RAW ELEGANCE | PENDANT  
1990–95

Sterling Silver  
6.5 x 2.0 cm



JACQUELINE RABUN

RAW ELEGANCE | CHOKER WITH LEATHER  
1990-95

Sterling Silver, Leather  
10 x 0.1 cm  
Leather Tie: 30 cm



JACQUELINE RABUN

RAW ELEGANCE | PENDANT  
1990-95

Sterling Silver  
4.5 x 3.5 cm





JACQUELINE RABUN

RAW ELEGANCE | SQUARE BANGLE  
1990–95

Sterling Silver  
7.0 x 7.0 x 0.3 cm



JACQUELINE RABUN

RAW ELEGANCE | SQUARE RING LARGE  
1990-95

Sterling Silver  
2.0 x 2.0 x 0.5 cm





JACQUELINE RABUN

RAW ELEGANCE | SQUARE RING MEDIUM  
1990-95

Sterling Silver  
2.0 x 2.0 x 0.4 cm



JACQUELINE RABUN

RAW ELEGANCE SQUARE RING | SMALL  
1990-95

Sterling Silver  
2.0 x 2.0 x 0.3 cm











1990

1990

1990 marks the date that Jacqueline Rabun established her jewellery brand in London, this classic gender-neutral ring design carries Jacqueline's sensual and organic design language.



JACQUELINE RABUN

1990 | 10mm | RING  
1990  
  
Sterling Silver  
1.6 x 1.0 cm Ring



JACQUELINE RABUN

1990 | 10mm | RING  
1990  
  
18k Yellow Gold  
1.6 x 1.0 cm



JACQUELINE RABUN

1990 | 15mm | RING  
1990  
  
Sterling Silver  
1.6 x 1.5 cm



JACQUELINE RABUN

1990 | 15mm | RING  
1990  
  
18k Yellow Gold  
1.6 x 1.5 cm











Jacqueline Rabun's poetic approach to design has resulted in the phenomenal impact of her jewellery creations worldwide.

The internationally renowned American jeweller seeks to illustrate the human experience through the medium of jewellery. Her signature approach combines fluid forms with concepts exploring philosophy and spirituality.

Jacqueline Rabun launched her debut jewellery collection Raw Elegance in 1990, upon her arrival in London. The series of hand-sculpted organic forms explored the innate purity of precious materials, gaining her instant acclaim amongst collectors of contemporary art and design. Her latest collection Metanoia has been made exclusively for Carpenters Workshop Gallery, and has been met with the same fervent praise.

Jacqueline Rabun's jewellery collections do not comprise mere design objects, but rather wearable works of art that each continue stories as told by the artist. She builds a language from organic and architectural forms, illustrated in ethical, noble materials.

**LONDON** LADBROKE HALL | 79 BARLBY ROAD | NOTTING HILL

**PARIS** 54 RUE DE LA VERRIERE | MARAIS

**NEW YORK** 693 FIFTH AVENUE | MIDTOWN

**LOS ANGELES** 7070 SANTA MONICA BLVD | WEST HOLLYWOOD