

An abstract artwork featuring a complex composition of layered colors and textures. The top left corner shows a blue and white patterned area, possibly a woven fabric or a specific painting technique. This transitions into a large, curved, reddish-brown and yellowish-orange section that dominates the upper right. Below this, there's a dark, almost black, textured area. The bottom left features a brown, textured surface with a grid-like pattern, resembling a woven material or a specific painting technique. The overall effect is one of depth and tactile quality, with various materials and colors layered upon each other.

NACHO CARBONELL

LOS ANGELES | INAUGURAL EXHIBITION

25 JUNE – 9 SEPTEMBER

CARPENTERSWORKSHOP GALLERY

FROM CAVEMAN TO BEACHCOMBER

the archeology of the future

Since the beginning of his caveman aesthetic, where his sculptural pieces would invite people to hide from ambient fear, his interest in archeology has grown even more prominent, proposing fragmented finds and materials that coagulate into magnificent auras that take away one's breath. As if moving from the rudimentary Stone Age to the enlightened Bronze age, Nacho Carbonell takes his progression in stride as he combs the earth for even more unique materials to be amalgamated into organic shapes. The pandemic took him deep into himself, turned him inside out and brought him to the wild shores of his Spanish childhood where he would play with his grandfather, working with familiar colliding materials such as sand and sea. He rediscovered diving and observed himself drifting in the vast ocean, scanning surfaces from above, accidental geological expressions that inspired his new quest for submerged matter from memory. He has an intuitive gift for assembling high and low materials that bond to form instinctive and primitive beauty. The witch-crafted designs are loaded with sand, water and wood and even stones, and speak volumes of animistic energies that create palpable reverberations, such as writing with mesh, sketching with driftwood and letting things rest to rust.

Fragmenting the pieces in chapters and craters and crevasses, he might be looking for another planet to explore. Imagining further challenges for his interest in archeology, scripting stories of the beginning of other cultures, progressing his dedication to topographical material research, which has become his landscaping vision.

In these collected processes, albeit compacted, the matter becomes more transparent, the work seems to become less protective, as if the man is leaving his cave to discover the call of open plains and the palpable freedom of water, air and space. Elevating and levitating his work to new heights, the pieces seem to float, waiting to be called to heaven. Their rose-tinted meshed up materials give them the afterglow of a glorious day, the sun setting as the city of Los Angeles is coming to rest, illuminated by a glorious Carbonell's chandelier.

Lidewij Edelkoort

NACHO CARBONELL

ONE-SEATER CONCRETE TREE

2022

Metal Mesh, Cork, Steel, Concrete, Light
Fittings

355 x 190 x 285 cm

139 3/4 x 74 3/4 x 112 1/4 in

Unique





NACHO CARBONELL

CONTAIN NATURE CABINET

2022

Metal Body, Sand, Paverpol, Wooden Sticks,
Metal Mesh, Spray Varnish Finish

215 x 155 x 63 cm

84 5/8 x 61 1/8 x 24 3/4 in

Unique









NACHO CARBONELL

PINK WOODEN STICK BUFFET

2022

Wood Structure, Sand, Paverpol, Wooden
Sticks, Spray Varnish Finish

81 x 266 x 53 cm

31 7/8 x 104 3/4 x 20 7/8 in

Unique







NACHO CARBONELL

BROKEN GLASS RAINBOW

2022

Broken Blown Glass Bubbles, Metal Welded
Branch, Stone Base, Silicone Cable, Light
Fittings

96 x 90 x 39 cm

37 3/4 x 35 3/8 x 15 3/8 in

Unique







NACHO CARBONELL

GRAVITY SPRING

2022

Metal Structure, Sand, Paverpol, Plaster, Glass
Container, Motor Fountain, Spray Varnish Finish

210 x 116 x 44 cm

82 5/8 x 45 5/8 x 17 3/8 in

Unique





NACHO CARBONELL

ARCHAEOLOGICAL FOLDING SCREEN

2022

Metal Structure, Pink Concrete

195 x 227 x 30 cm

76 3/4 x 89 3/8 x 11 3/4 in

Unique







NACHO CARBONELL

STONE TABLE LAMP

2022

Metal Welded Branch and Base, Stone Lamp

Shade and Base, Silicone Cable, Light Fittings

85 x 75 x 64 cm

33 1/2 x 29 1/2 x 25 1/4 in

Unique





NACHO CARBONELL

CANDY COTTON LONG COCOON CHANDELIER
2022

Metal Mesh with Paverpol and Pigments, Metal
Welded Branch, Silicone Cable, Light Fittings

80 x 270 x 100 cm

31 1/2 x 106 1/4 x 39 3/8 in

Unique







NACHO CARBONELL

METAL MESH MUSHROOM LAMP

2022

Metal Welded Lamp Shade and Structure,
Concrete Base, Silicone Cable, Light Fittings

105 x 76 x 42 cm

41 3/8 x 29 7/8 x 16 1/2 in

Unique



NACHO CARBONELL

DRIED CABINET

2022

Metal Body, Sand, Paverpol, Plaster, Spray
Varnish Finish

173 x 133 x 40 cm

68 1/8 x 52 3/8 x 15 3/4 in

Unique













NACHO CARBONELL

EL PEÑON

2022

Wood, Carrara Marmol Sand, Wooden Sticks,
Paverpol, Metal Frame, White Concrete, Spray
Varnish Finish

88 x 240 x 102 cm

34 5/8 x 94 1/2 x 40 1/8 in

Unique







NACHO CARBONELL

CARDBOARD CHAIRS

2022

Metal Structure, Paverpol, Cardboard Stripes,
Paper Mache, Spray Varnish Finish

74 x 56 x 46 cm

29 1/8 x 22 1/8 x 18 1/8 in

Unique







NACHO CARBONELL

WHITE NET

2022

Wood, Yute, Paverpol, Sand, Threads, Metal
Rods, Spray Varnish Finish

80 x 168 x 74 cm

31 1/2 x 66 1/8 x 29 1/8 in

Unique









NACHO CARBONELL

LINE OF DROUGHT

2022

Wooden Frame, Yuta, Paverpol and Marmol

Sand, Clay, Spray Varnish Finish

COMPOSED OF 5 ELEMENTS, EACH :

15 x 66 x 94 cm

5 7/8 x 26 x 37 1/8 in

Unique



NACHO CARBONELL

COLORFUL RAINBOW

2022

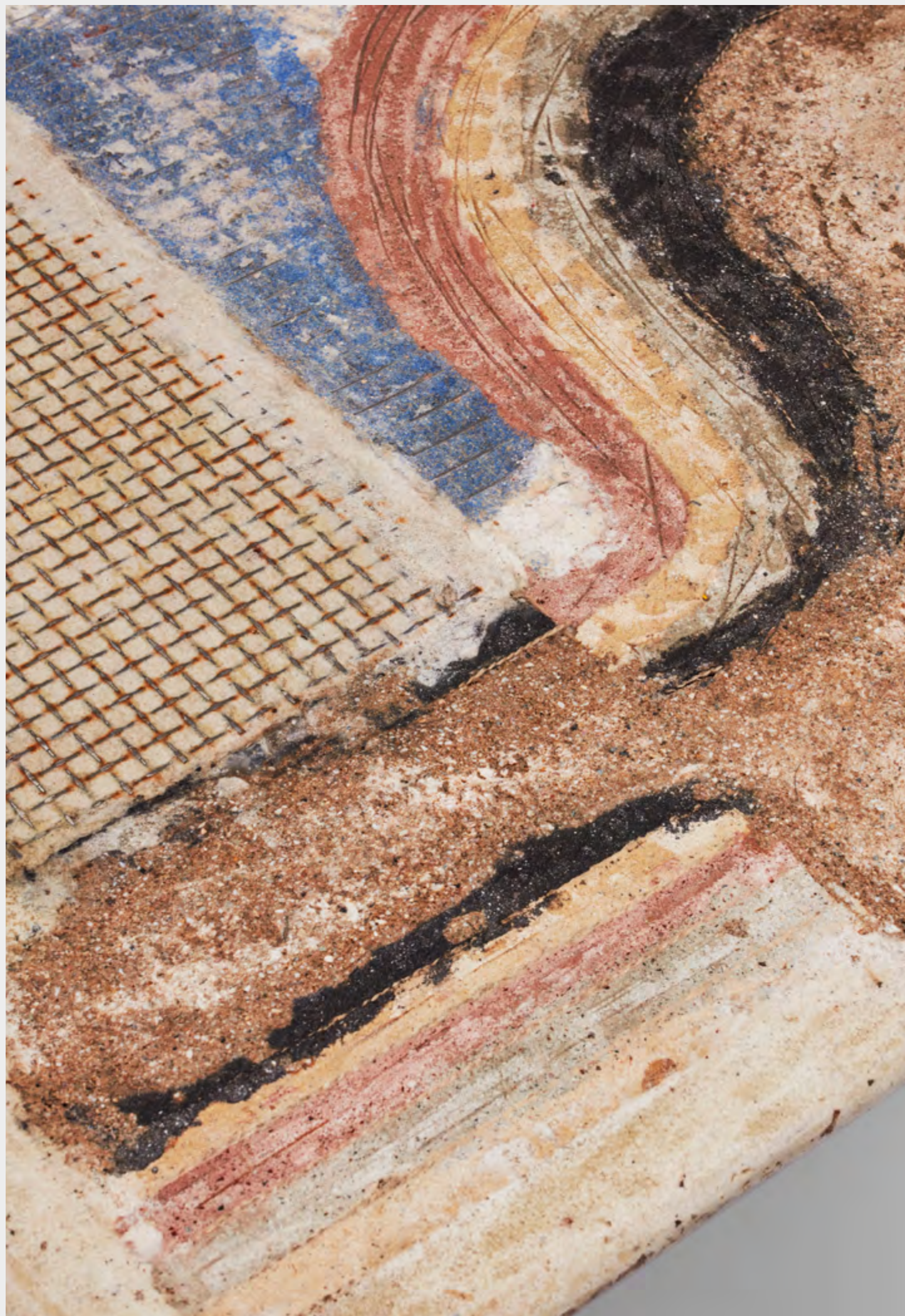
Wood, Colored Marmol Sand, Paverpol, Metal
Mesh, Concrete, Spray Varnish Finish

79 x 184 x 79 cm

31 1/8 x 72 1/2 x 31 1/8 in

Unique





NACHO CARBONELL

MESSING WITH THREAD

2022

Wood, Pavelpol, Marmol Sand, Brecker, Thread
for the Messing Composition, Metal Mesh, Metal
Rods, Spray Varnish Finish

79 x 171 x 78 cm

31 1/8 x 67 3/8 x 30 3/4 in

Unique





LONDON 6 Albemarle Street / W1S 4BY

PARIS 54 rue de la Verrerie / 75004

NEW YORK 693 Fifth Avenue / NY 10022

LOS ANGELES 7070 Santa Monica Boulevard / CA 90038