

# PAD PARIS

29 MARCH – 2 APRIL



Carpenters Workshop Gallery proudly returns for the 25th edition of PAD Paris, with a bold exhibition of new artworks presented for the first time with the gallery.

A very limited set of eight chairs, designed by Carlo Mollino for the prestigious Casa del Sole Italian ski resort apartments in 1953, are a highlight of the show, while leading designer Martin Székely demonstrates essentialist design with several pieces previously owned by the late Karl Lagerfeld.

French artist Thibault Hazelzet presents a collection of ceramic vessels, each modelled around a delicately balanced arrangement of dried flowers, counterbalancing the pieces of exceptional historic design with ultra-contemporary, demonstrating Carpenters Workshop Gallery's commitment to timeless design.



## MARTIN SZÉKELY

### WEST COAST TABLE

2008

Corian®, Aluminium Honeycombs, Resin

76 x 300 x 122 cm

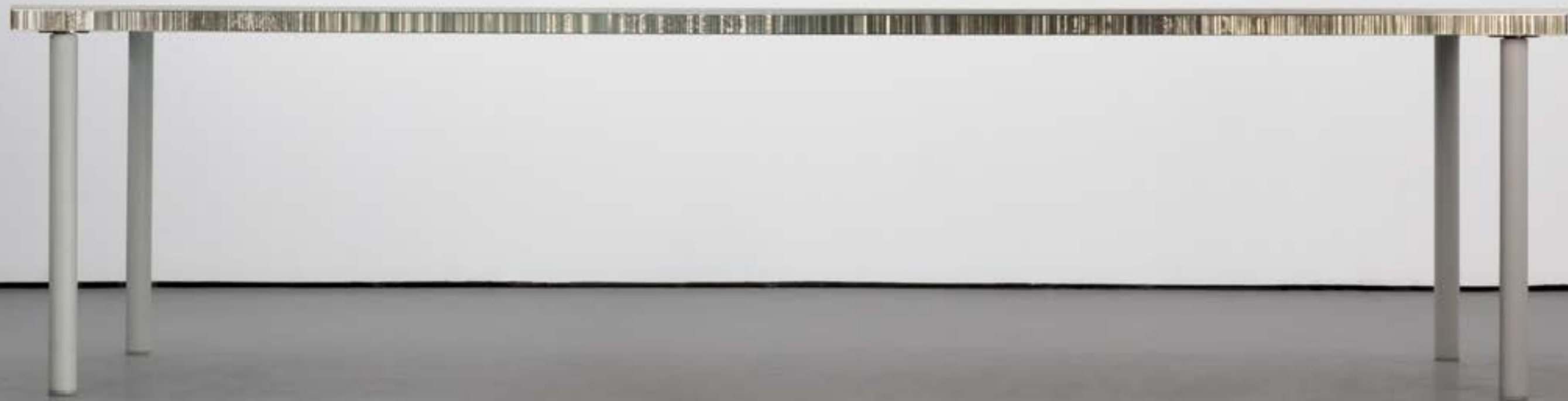
29 7/8 x 118 1/8 x 48 1/8 in

Edition of 8 + 2 AP

**PROVENANCE** Karl Lagerfeld

Martin Székely's West Coast Table is formed of an expansive white table top in Corian and aluminium honeycomb, echoing elements of architectural and design styles seen along the US West Coast. A natural affinity for light and space is typical of the West Coast style, manifested in this three-metre long table. Through his use of contemporary materials, Székely aims to reveal their internal consistencies and emphasise the implicit relationship between material characteristics and function.





## MARTIN SZÉKELY

### HEROIC SHELVES 270

2009

Aluminium, Aluminium Honeycomb

157 x 83.5 x 27 cm

61 3/4 x 32 7/8 x 10 5/8 in

Edition of 8 + 2 AP

**PROVENANCE** Karl Lagerfeld

Martin Székely describes his Heroic Shelves as 'a builder's dream'. He has constructed the sturdy and rigid structure from the bare minimum requirements necessary, arriving at an aluminium honeycomb structure of orthogonal planes, glued at each intersection to fix the shelves.

Aluminium honeycomb emphasises all the original characteristics of aluminium that make it such a versatile material to work with. Its lightness and strength determine that it is a highly functional metal, pre-existing qualities that are then appropriated by the artist.



## MARTIN SZÉKELY

### N.P.B. TABLE

2007

Corian®, Aluminium Honeycombs, Resin

75.5 x 165 cm

29 3/4 x 65 in

Edition of 8 + 2 AP

**PROVENANCE** Karl Lagerfeld

The N.P.B. Table is a circular table supported on one central pillar in an exemplary show of balance and proportion.

Székely makes a deliberate choice to not draw upon himself as the main creative force behind an artwork. He prefers to represent his objects in their most essential forms, showing what he calls their 'hard stones'. The artist's rejection of subjectivity in his work makes his objects compelling, powerfully expressing the truth of their nature.



## MARTIN SZÉKELY

### SET OF 2 HEROIC CARBON STOOL – STOOL 1 2010

Carbon Fibre  
46 x 46 x 36 cm  
18 1/8 x 18 1/8 x 14 1/8 in  
Edition of 8 + 2 AP

**PROVENANCE** Karl Lagerfeld

Since Martin Székely began developing his artistic practice in the 1970s, his work has spanned from industrial to environmental design, drawing on large fields of research. He has often been drawn to conceptual art, in particular the work of Donald Judd which is evidenced in the forms of his Heroic Carbon series.



## MARTIN SZÉKELY

### HEROIC CARBON DESK LOOP

2010

Carbon Fibre

117 x 226.5 x 80 cm

46 1/8 x 89 1/8 x 31 1/2 in

Edition of 8 + 2 AP

**PROVENANCE** Karl Lagerfeld

Since Martin Székely began developing his artistic practice in the 1970s, his work has spanned from industrial to environmental design, drawing on large fields of research. He has often been drawn to conceptual art, in particular the work of Donald Judd which is evidenced in the form of his Heroic Carbon Desk Loop.

Negotiating a relationship between full and emptiness, his ultra-functional desk aims to move beyond minimalism into the realm of essentialism, and even beyond that. Székely aims for his work to be simply 'commonplace'.

The result is an uninterrupted sheet of carbon fibre, looping back on itself at one end, to form itself into a shape that fulfils all the requirements of a desk, existing in perfect clarity.





## CARLO MOLLINO

### MOD. A, SET OF 8

CIRCA 1953

Chestnut Wood, Oak Wood, Brass

90 x 45 x 44 cm

35 3/8 x 17 3/4 x 17 3/8 in

Carlo Mollino is an Italian architect, designer and photographer. He created a unique oeuvre, often site-specific works and never manufactured for the general public. Rarely seen in the market as a set of 8, these chairs were designed for the prestigious Casa del Sole apartments in Cervinia, a luxurious Italian ski resort project near Switzerland carried by Mollino in 1953. Mollino brings the culture of the Alps into the Modern design movement by redesigning the traditional alpine three-legged wooden chair.

It is sturdy, pragmatic and conceived to be used by skiers. It had to sustain weight, snow and moisture; but the lines are sculptural, elegant, and the curves follow perfectly these of the human body. Each chair was refined by hand, to create a perfectly smooth finish.

The series is a very limited production of 150 models, manufactured by Ettore Canali in Brescia, a company specialized in luxury wooden furniture.

The Museo Carlo Mollino has authenticated the set.







## THIBAUT HAZELZET

### MEMENTO 1

2023

Enamelled Stoneware, Patinated Brass, Glass,  
Dried Flowers  
45 x 32 x 24 cm  
17 3/4 x 12 5/8 x 9 1/2 in  
Edition Unique



Thibault Hazelzet's Laocoon light series comprises bronze artworks that re-appropriate techniques from his previous work in ceramics and jewellery. Bronze components of each model are cast via the lost-wax bronze casting method, which is able to capture minute details in the final mould, and Hazelzet uses old cameo engravings to imprint their designs in relief.

Enamelled ceramic pieces are then combined with the bronze, allying the two materials and making each piece unique. The artist is always in search of strong contrasts in his work, with these pieces varying between a 'barbarian classicism' and a 'civilised vandalism'. References to antiquity are clear throughout the artworks, displayed as structures verging on ruins.



**THIBAUT HAZELZET**

**MEMENTO 2**

2023

Enamelled Stoneware, Patinated Brass, Glass,  
Dried Flowers  
40 x 23 x 22 cm  
15 3/4 x 9 x 8 5/8 in  
Edition Unique



## THIBAUT HAZELZET

### MEMENTO 3

2023

Enamelled Stoneware, Patinated Brass, Glass,  
Dried Flowers  
39 x 32 x 27 cm  
15 3/8 x 12 5/8 x 10 5/8 in  
Edition Unique



## THIBAUT HAZELZET

### MEMENTO MORI CASANOVA 3

2023

Enamelled Stoneware, Gold, Patinated Brass,  
Dried Flowers  
43 x 30 x 22 cm  
16 7/8 x 11 3/4 x 8 5/8 in  
Edition Unique



**THIBAUT HAZELZET**

**MEMENTO MORI CASANOVA**

2023

Enamelled Porcelain, Gold, Patinated Brass,  
Dried Flowers

46 x 23 x 27 cm

18 1/8 x 9 x 10 5/8 in

Edition Unique



## THIBAUT HAZELZET

### MEMENTO MORI CASSANOVA 2

2023

Enamelled Porcelain, Gold, Patinated Brass,  
Dried Flowers  
33 x 30 x 20 cm  
13 x 11 3/4 x 7 7/8 in  
Edition Unique



## THIBAUT HAZELZET

### MEMENTO MORI 2

2023

Enamelled Stoneware, Patinated Brass,  
Dried Flowers  
60 x 30 x 26 cm  
23 5/8 x 11 3/4 x 10 1/4 in  
Edition Unique





## THIBAUT HAZELZET

### MEMENTO MORI 3

2023

Enamelled Stoneware, Patinated Brass,  
Dried Flowers  
38 x 30 x 23 cm  
15 x 11 3/4 x 9 in  
Edition Unique



## THIBAUT HAZELZET

### MEMENTO MORI

2023

Enamelled Stoneware, Patinated Brass,  
Dried Flowers  
50 x 26 x 28 cm  
19 3/4 x 10 1/4 x 11 in  
Edition Unique



## THIBAUT HAZELZET

### LAOCOON « PETITE GUERRIÈRE »

2023

Patinated Bronze, Patinated Steel,  
Glazed Ceramic, Light Fittings

50 x 40 x 30 cm

19 3/4 x 15 3/4 x 11 3/4 in

Edition Unique



## THIBAUT HAZELZET

### LAOCOON « APOLLON »

2023

Patinated Bronze, Patinated Steel,  
Glazed Ceramic, Light Fittings

55 x 40 x 35 cm

21 5/8 x 15 3/4 x 13 3/4 in

Edition Unique



## THIBAUT HAZELZET

### LAOCOON XX

2023

Patinated Bronze, Patinated Steel,  
Glazed Ceramic, Light Fittings

55 x 40 x 35 cm

21 5/8 x 15 3/4 x 13 3/4 in

Edition Unique



## THIBAUT HAZELZET

### LAOCOON

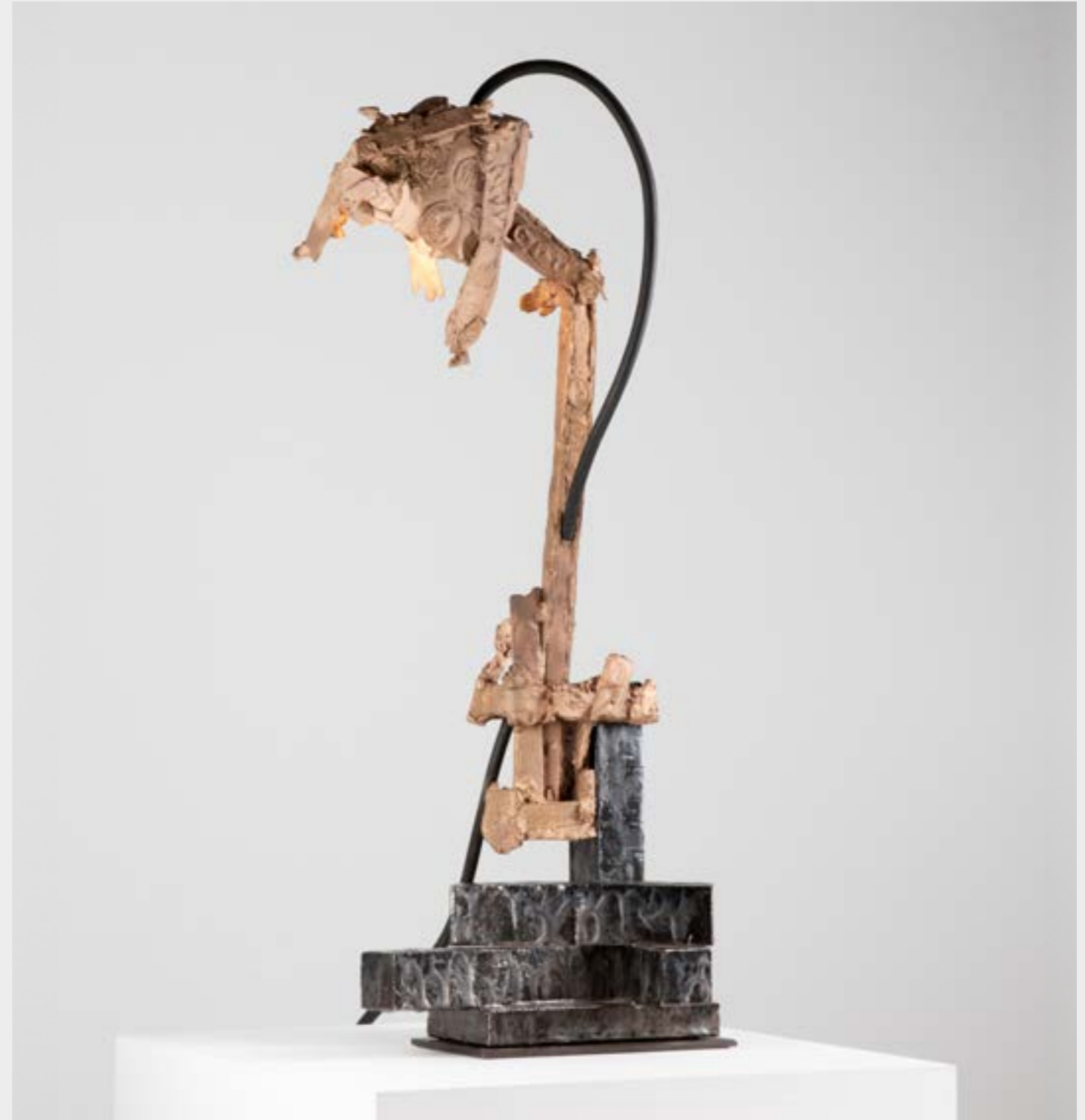
2023

Patinated Bronze, Patinated Steel,  
Glazed Ceramic, Light Fittings

78 x 40 x 27 cm

30 3/4 x 15 3/4 x 10 5/8 in

Edition Unique



## FREDERIK MOLENSCHOT

### CL DUNE

2021

Bronze, Light Fittings

65 x 180 x 65

25 5/8 x 70 7/8 x 25 5/8

Edition of 8 + 4 AP

The CL-Dune light sculpture by Dutch designer Frederik Molenschot, is a large-scale light sculpture which aims to take ownership of its environment and, in the artist's words, "overwhelm" the viewer.

Molenschot hand-shapes his artworks to achieve the level of detail he demands and to take ownership of the creation. In a confrontation with the metal, he bends it to his will and imbues it with his own larger-than-life vitality. The City Light series envisions an abstract futuristic city as seen at night, with networks of light layered on top of one another.



## KOSTAS LAMBRIDIS

### KEPLER-60H

2021

Aluminium, Brass, Stained Glass, Acrylic Glass,  
Neon Tube, Leds, Dot Matrix Led Screens, Video,  
various Electronics

60 x 60 x 60 cm

23 5/8 x 23 5/8 x 23 5/8 in

Edition Unique

Kostas Lambridis constructs complex artworks from amalgamated materials to question accepted systems of material value.

Lambridis treats each component of his Kepler-60h light sculpture equally, choosing a sphere as the most suitable shape with which to represent a 3D non-hierarchical structure. The planet-like structure hangs as if in orbit, both a light-giving moon and human-made satellite.

Traditional material characteristics have been reassigned, as neon glass tubes break through the tougher aluminium shell and each component assumes a certain fluidity. Stained-glass and LEDs are juxtaposed, tracing an evolutionary history of human technology.



## ETTORE SOTTASS

### MIRROR

1957

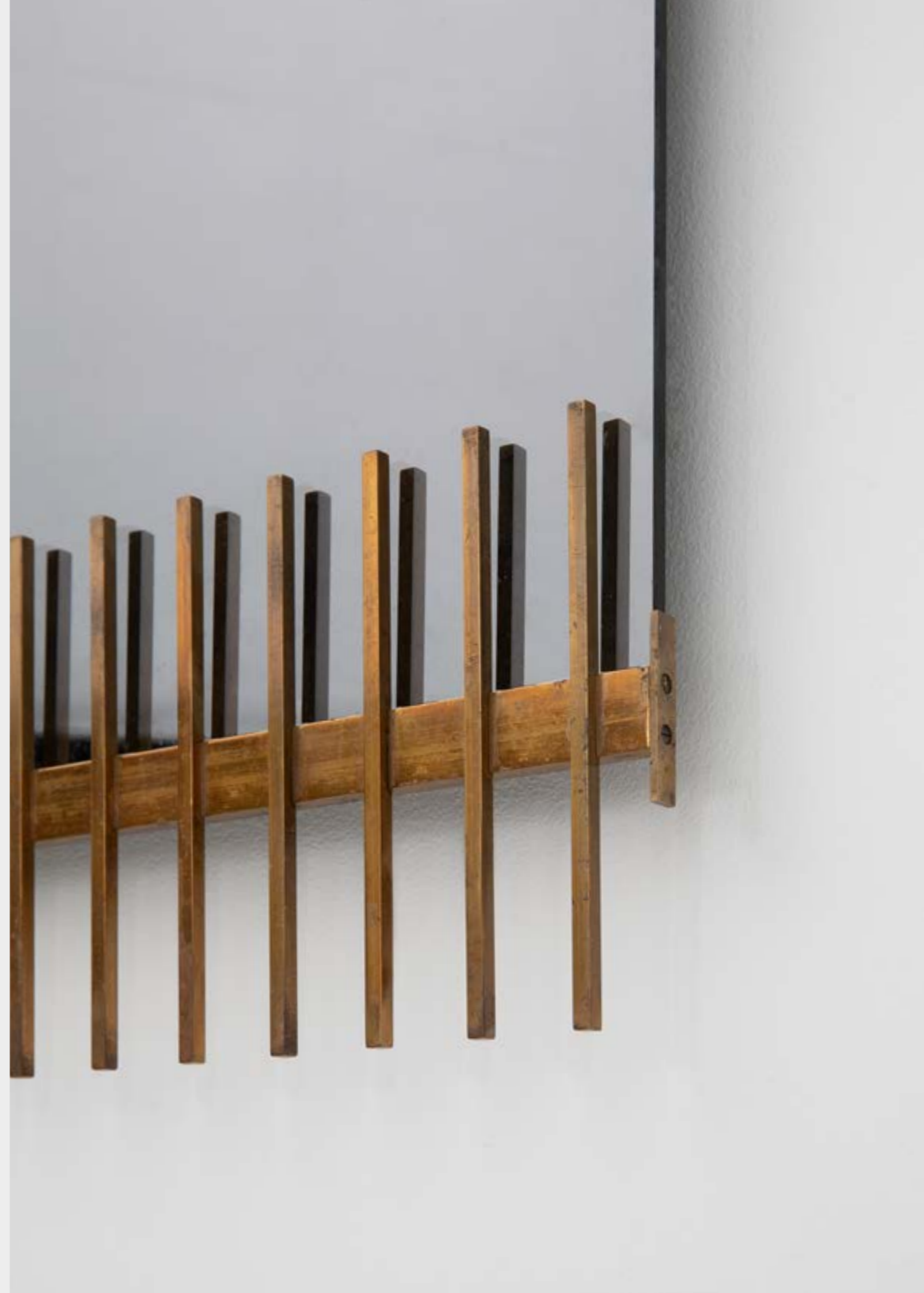
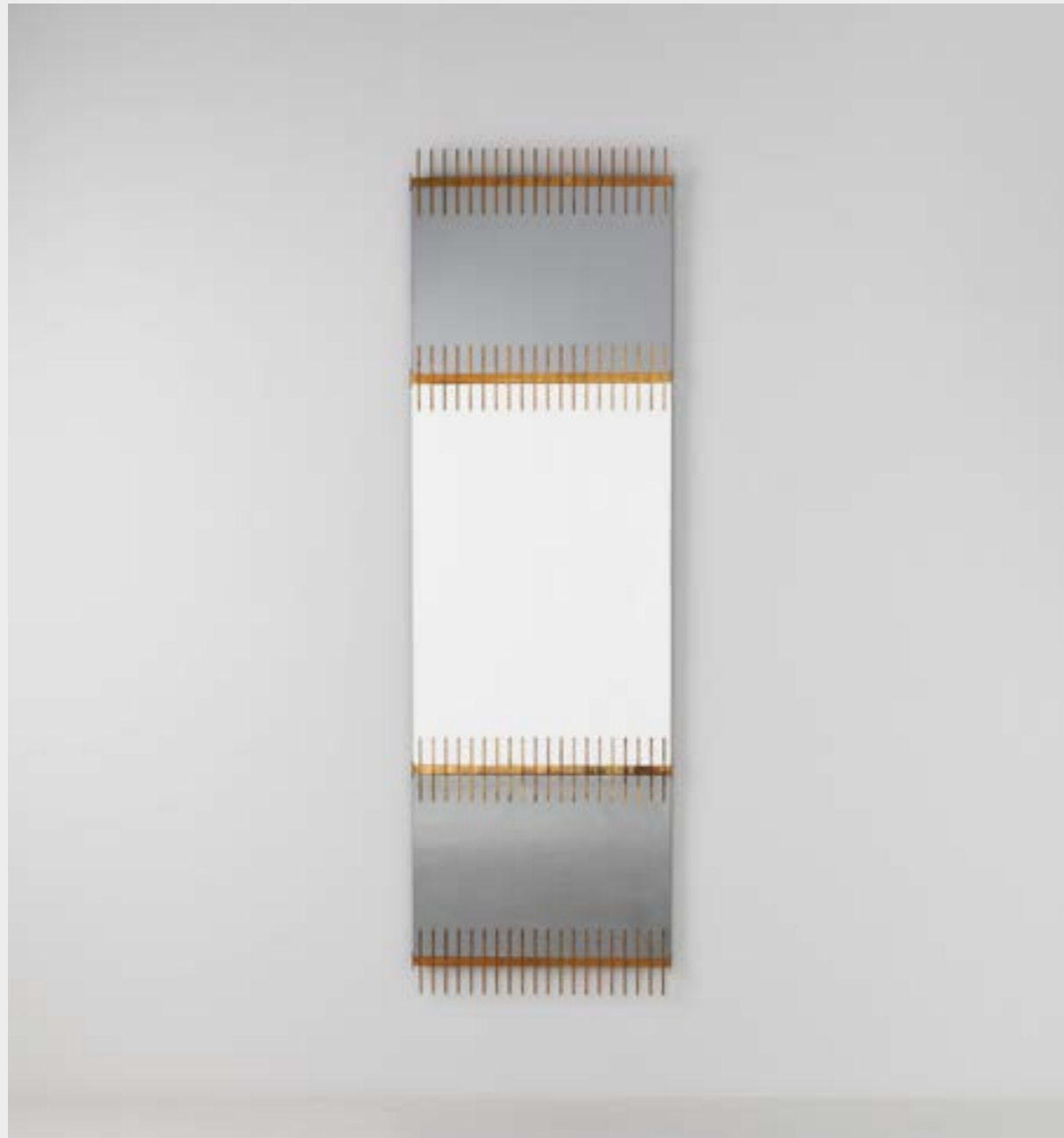
Metal, Glass

195 x 60 x 5 cm

76 3/4 x 23 5/8 x 2 in

Historical Design

After discovering product design in the agency of George Nelson (lead designer for the Herman Miller furniture company) in the United States, Ettore Sottsass came back to Italy where he participated in post-war reconstruction while becoming an artistic consultant for Poltronova and Olivetti. He created playful and innovative designs in new materials such as fiberglass. In 1957, he designed this wall mirror, manufactured by Santambrogio and De Berti. The mirror presents a unique form and combination of coloured glass and reflective surfaces. Between poetry and exuberance, Sottsass' work is at the frontier between art and design.



## SYLVAIN RIEU-PIQUET

### MIRROR BRONZE 1

2021

Bronze, Mirror

130 x 130 x 15 cm

51 1/8 x 51 1/8 x 5 7/8 in

Edition of 8 + 4 AP

Each piece of the Short-Lived Love collection is a hybrid, a sort of a sculpted creature, made from the organic and baroque imagination of Sylvain Rieu-Piquet.

To achieve the bronze finish of the mirror required a particularly demanding welding and carving skill in order to translate the finesse and precision of the initial wax model. The bronze of the mirror is tinted by hand, in a slightly golden tone, which unifies the object and reinforces its uniqueness.

The ornamental language of the piece can be found between the vegetable and animal kingdoms, in an indefinite mixture of lianas, roots, feathers and snake skins, give the piece a dreamlike formation.



**KARL LAGERFELD**

**UNTITLED XII ASHTRAY SQUARE  
ARABESCATO FANTASTICO**

2018

Arabescato Fantastico Marble

6 x 22.2 x 22.2 cm

2 3/8 x 8 3/4 x 8 3/4 in

Edition of 8 + 4 AP



**KARL LAGERFELD**

**UNTITLED XII ASHTRAY RECTANGLE  
ARABESCATO FANTASTICO**

2018

Arabescato Fantastico Marble

3.4 x 37.5 x 22.8 cm

1 3/8 x 14 3/4 x 9 in

Edition of 8 + 4 AP



Inspired by antiquity, Karl Lagerfeld's artworks combine precise canonical proportions with luxurious materials. Each rendered in arabescato fantastico, a noble marble renowned for the high contrast of its black and white veins, his sculptural designs resonate with a classic timelessness.



**RICK OWENS**

**HALF BOX PETRIFIED WOOD**

2011

Petrified Wood

77 x 50 x 50 cm

30 1/4 x 19 3/4 x 19 3/4 in

Edition of 4 + 4 AP



**CARPENTERSWORKSHOP GALLERY**

**LONDON** 79 BARLBY RD LONDON | W10 6AZ

**PARIS** 54 RUE DE LA VERRERIE | 75004

**NEW YORK** 693 FIFTH AVENUE | NY 10022

**LOS ANGELES** 7070 SANTA MONICA BOULEVARD | CA 90038