



**NACHO CARBONELL**  
ESCAPING FORWARD

LADBROKE HALL | LONDON

CARPENTERS WORKSHOP GALLERY

Over the past two decades, Nacho Carbonell has developed a distinctive artistic language characterised by his tactile sculptures that treat objects as living organisms, most notably his renowned *Cocoon* series. This new body of work exhibited in *Escaping Forward* at Carpenters Workshop Gallery in London marks a transformative moment for the revered Spanish artist. Presenting an exploration into themes of memory, texture and materiality, the collection demonstrates the next phase of Carbonell's career.

In this exhibition of over 30 works, Carbonell uses a collage-like approach, integrating remnants and leftover materials from previous projects in his studio to forge new, vibrant artworks. A standout piece that illustrates this technique is *The Roots* (Mural), a three-dimensional mural that elicits the tones and textures of a landscape, a motif that has been central to his work for the past twenty years. Using a process of rediscovery, this methodology reflects a broader metaphor for his creative journey, where gaps, overlaps and gradients signify the state of flux within his practice.

A *La Mesa* features a sandy-coloured table with a mesh bottom and a stone top, reminiscent of Carbonell's childhood memories of diving and finding fishing nets entangled in rocks. This piece, like many others in the collection, evokes a sense of nostalgia and the uncovering of his own personal history. Two wall-mounted sculptures *Mesh Mushroom Doors* and *Mesh Mushroom Selve* are crafted with interactive doors that invite viewers to discover hidden elements within. These works emphasise the notion of fossils and the passage of time, casting the objects as relics that hold secrets waiting to be uncovered.

The exhibition also displays a series of cabinets and room dividers, each designed to interact with the viewer. *Dune Cabinet* features an exterior made of bark that conceals a smooth, intricate interior with a tree branch growing inside. Another piece, *Corteza Cabinet*, initially inspired by a desert landscape, evolved into a topographic exploration that nods to ancient caves carved into stone.

*Ceramic Standing Lamp* is a light sculpture characterised by vibrant greens and yellows, combining thick ceramics and metal pieces. This work encapsulates Carbonell's experimental approach to materials, blending different textures and forms to create a cohesive yet dynamic whole. The use of clay in this sculpture, a material typically absent from his work, brings forth an earthy, bendy and sensual aesthetic to the composition. The use of this material also reveals the experimental direction in which Carbonell's artistic process is heading.

Carbonell's continued fascination with the notion of living organisms is evident throughout the exhibition. His sculptures often resemble hybrid forms, merging organic and mineral elements to create pieces that appear both alive and fossilised. This duality is particularly apparent in the *Table Lamp* series of honeycomb-textured mesh sculptures. Similar to his previous *Cocoon* series, where mesh and organicity intermingle, these pieces combine wood and metal, juxtaposed to highlight the relationship between natural and man-made materials.

Carbonell's new body of work is a celebration of both the triumphs and the mistakes inherent in the creative process. Each piece illustrates his belief that every moment, whether good or bad, contributes to the evolution of his art. This exhibition invites viewers to engage with his sculptures on a tactile and sensory level, exploring notions of history, memory and material that are embedded into each layer.



“THIS IS A NEW BEGINNING,  
I’M TRYING TO ESCAPE FORWARD.”



*“I’ve been going through changes over the years,  
my work is now slower and more mature. This  
escape forward is showing this maturity, while  
staying loyal to my roots and my work. I’m using  
every resource around me, the materials, ideas,  
knowledge and naiveness.”*

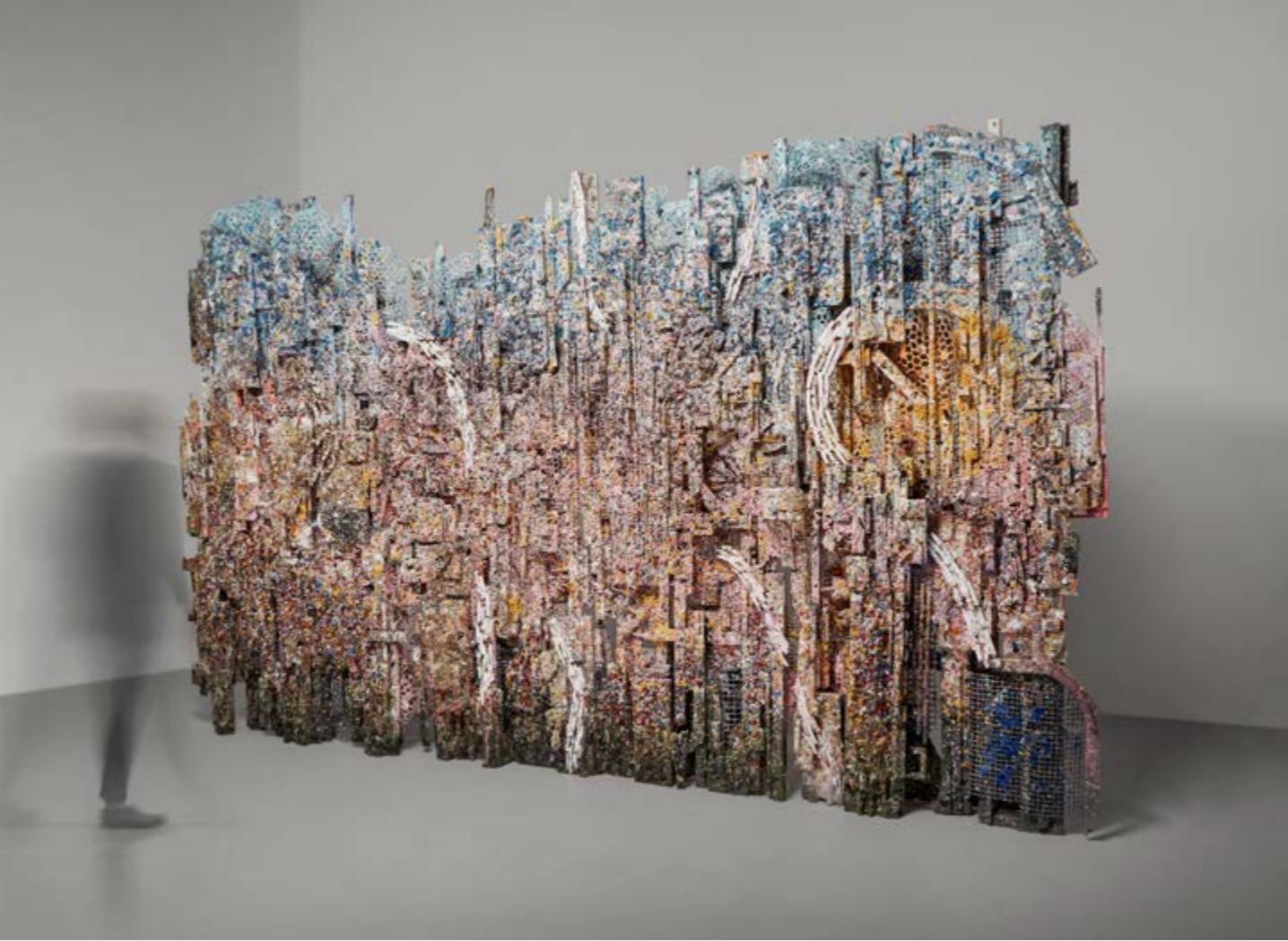
NACHO CARBONELL

THE ROOTS (MURAL)  
2024

Metal Body, Sand, Paverpol,  
Wooden Sticks, Metal Mesh,  
Spray Varnish Finish  
Composed of 4 panels,  
overall dimensions:  
280 x 470 x 20 cm  
110 1/4 x 185 x 7 7/8 in  
Unique

*The Roots* (Mural) is a three-dimensional mural that elicits the tones and textures of a landscape, a motif that has been central to Nacho Carbonell's work. Using a collage-like approach, Carbonell has integrated remnants and leftover materials from previous projects in his studio to forge this new, vibrant artwork. Using a process of rediscovery, this methodology reflects a broader metaphor for his creative journey, where gaps, overlaps and gradients signify a state of flux.

➞ MORE OF THIS WORK





NACHO CARBONELL

BACK TO BACK CABINET  
2023

Metal Body, Sand, Paverpol,  
Wooden Sticks, Metal Mesh,  
Spray Varnish Finish  
205 x 150 x 87 cm  
80 3/4 x 59 x 34 1/4 in  
Unique

This human-scale work by Nacho Carbonell bears the function of a cabinet and bookshelf. The undulating exterior surface, made of wooden sticks, resembles an organic form. Inside, a winding, S-shaped metal piece supports the whole structure, with shelves placed across various levels from top to bottom. Instead of doors to close the cabinet, the viewer must walk around the work to see its interior either exposed or concealed.

➔ MORE OF THIS WORK





NACHO CARBONELL

CORTEZA CABINET  
2024

Metal Body, Sand, Paverpol,  
Wooden Sticks, Metal Mesh,  
Spray Varnish Finish  
240 x 140 x 70 cm  
94 1/2 x 55 1/8 x 27 1/2 in  
Unique

This cabinet by Nacho Carbonell invites the viewer to inspect it closely and interact with it, to discover where to insert their hand and thus open the doors. Resembling a dark tree trunk, the exterior features various pigments and textures produced with lightweight materials like cork making the piece lighter than its weighty appearance suggests. Entering the smoother inner world of the work, the viewer finds a tree branch inside, producing a sense of exploration, discovery and experience.

[➔ MORE OF THIS WORK](#)





NACHO CARBONELL

TREE TABLE LAMP  
2024

Metal Mesh with Paverpol,  
Pigments and Acrylic Paint, Metal  
Welded Branch, Concrete Base,  
Silicone Cable, Light Fittings  
82 x 46 x 40 cm  
32 1/4 x 18 1/8 x 15 3/4 in  
Unique

*Tree Table Lamp* features large, elongated, petal-like shapes fanning out against each other and held up by a metal branch, overall resembling a tree. The winding, maze-like shape created within the structure reflects the artist's interest in cartography and topography. As part of a new series of small table lamps, the work indicates the artist exploring new kinds of shapes, producing a body of work that differs from his previous series.

➔ MORE OF THIS WORK





## NACHO CARBONELL

ROCK TABLE LAMP  
2024

Metal Mesh with Paverpol,  
Pigments and Acrylic Paint, Metal  
Welded Branch, Concrete Base,  
Silicone Cable, Light Fittings  
100 x 65 x 56 cm  
39 3/8 x 25 5/8 x 22 in  
Unique

In *Rock Table Lamp*, Carbonell creates a form made of various conjoined fragments, together resembling vegetation or a mass land formation. The shape reflects a new spatial exploration by the artist, differing from previous *Cocoon* series by incorporating a greater linear or architectural awareness. The murky green colour adds to the earthy, organic quality of the work.

[➔ MORE OF THIS WORK](#)



NACHO CARBONELL

MEDUSA TABLE LAMP  
2024

Metal Mesh with Paverpol,  
Pigments and Acrylic Paint, Metal  
Welded Branch, Concrete Base,  
Silicone Cable, Light Fittings  
85 x 69 x 57 cm  
33 1/2 x 27 1/8 x 22 1/2 in  
Unique

➔ MORE OF THIS WORK



*Medusa Table Lamp* features snake-like shapes made of various tubes of metal mesh intertwining to create one mass form. The structure is held up by a metal branch that emerges from a stone block. The dark colour of the form feels ominous, inviting the viewer's eye to get lost within it. The work reflects a greater architectural awareness that the artist is bringing to lamp pieces.





## NACHO CARBONELL

SQUARE BUBBLE TABLE LAMP  
2024

Metal Mesh with Paverpol and  
Pigments, Metal Welded Branch,  
Concrete Base, Silicone Cable,  
Light Fittings  
103 x 71 x 19 cm  
40 1/2 x 28 x 7 1/2 in  
Unique

Part of a series of new table lamps, *Square Bubble Table Lamp* exemplifies Nacho Carbonell's transition toward a linear approach. The geometric lines used to create the shape of the lamp are inspired by architecture, while the mesh metal materials are reminiscent of Carbonell's traditional approach to light sculptures.

[➔ MORE OF THIS WORK](#)





## NACHO CARBONELL

CONCRETE BASE TABLE LAMP  
2023

Metal Mesh with Paverpol,  
Pigments and Acrylic Paint, Metal  
Welded Branch, Concrete Base,  
Silicone Cable, Light Fittings  
70 x 60 x 40 cm  
27 1/2 x 23 5/8 x 15 3/4 in  
Unique

[➔ MORE OF THIS WORK](#)

The *Table Lamp* series reflects Nacho Carbonell's fascination with living organisms, with works resembling hybrid forms that merge organic and mineral elements. In this sculpture, the artist continues his exploration of cocoon-like shapes from previous works, using similar materials but applying them in a new way. The piece sees silicone applied to a metallic mesh, creating colourful effects with spray and acrylic paint. As in previous *Cocoon* pieces, the organic forms of this lamp suggest expressive creatures, creating an object that is both fantastical and functional. The combination of materials like wood and metal highlights the relationship between the natural and manmade worlds.



NACHO CARBONELL

RAINING RAINBOW  
2024

Metal Welded Strtucture, Stone  
Base, Silicone Cable, Light Fittings  
97 x 60 x 35 cm  
38 1/4 x 23 5/8 x 13 3/4 in  
Unique

*Raining Rainbow* represents a landscape in which a luminous rainbow mingles with an imposing, dark cloud. A bronze square grid serves to create the impression of the cloud, with forms that suggest water droplets; its linear structure contrasts with the organic shapes for which the artist has been previously known, indicating an evolution in his practice. Illuminated by a light source emerging from the rainbow, the work casts a shadow onto the wall on which it sits. The invasion of light and shadow allows the work to grow outside of its physical form.

➔ MORE OF THIS WORK





## NACHO CARBONELL

DUNE CABINET  
2023

Metal Body, Cork, Paverpol, Metal Mesh, Welded Metal Baskets Steel and Bronze, Spray Varnish Finish  
270 x 147 x 90 cm  
106 1/4 x 57 7/8 x 35 3/8 in  
Unique

This cabinet by Nacho Carbonell invites the viewer to inspect it closely and interact with it, to discover where to insert their hand and thus open the doors. Resembling a dark tree trunk, the exterior features various pigments and textures produced using bark from many different trees. Lightweight materials like cork mean that the piece is lighter than its weighty appearance suggests. Entering the smoother inner world of the work, the viewer finds a tree branch inside, producing a sense of exploration, discovery and experience.



## NACHO CARBONELL

A LA MESA

2022

Wood, Paverpol, Marmol Sand,  
Fishing Net, Metal Rods, Concrete,  
Spray Varnish Finish  
78 x 352 x 120 cm  
30 3/4 x 138 5/8 x 47 1/4 in  
Unique

Inspired by Nacho Carbonell's childhood memories of snorkelling on the Spanish coast, *A La Mesa* stands like a fishing net set in stone. In this collection, Nacho Carbonell views objects as living organisms, now fossilised and evoking a certain nostalgia. Carbonell skillfully plays with textures, colours and natural materials merging organic and mineral elements, celebrating nature's duality and the integration of life's remnants into art. The table's stone top, in which a fossil-like net and sand are embedded, symbolises the fusion of past and present.

[→ MORE OF THIS WORK](#)







## NACHO CARBONELL

BIG RAINBOW STONE TABLE LAMP  
2024

Metal Mesh with Paverpol and  
Pigments and Acrylic Paint, Metal  
Welded Branch, Concrete Base,  
Silicone Cable, Light Fittings  
132 x 90 x 75 cm  
52 x 35 3/8 x 29 1/2 in

Part of a new series of small table lamp pieces reflecting Nacho Carbonell's inspiration from living organisms, *Big Rainbow Stone Table Lamp* features hybrid forms that merge organic and mineral elements. The artist uses metal mesh – a common technique in his work – to give this sculpture a coral-like appearance, evoking underwater organisms and landscapes.

[➔ MORE OF THIS WORK](#)





## NACHO CARBONELL

CONCRETE BASE TABLE LAMP  
2023

Metal Mesh with Paverpol and  
Pigments, Metal Welded Branch,  
Concrete Base, Silicone Cable,  
Light Fittings  
74 x 45 x 38 cm  
29 1/8 x 17 3/4 x 15 in  
Unique

[➔ MORE OF THIS WORK](#)

In this sculpture, Nacho Carbonell continues his exploration of cocoon-like shapes, using similar materials as previous works but applying them in a new way. It forms part of the *Table Lamp* series, which reflects the artist's fascination with the notion of living organisms, with works resembling hybrid forms that merge organic and mineral elements. Featuring silicone applied to a metal mesh, the piece has a colourful appearance created by spray and acrylic paint, while its organic shapes suggest expressive creatures, thus rendering the lamp both fantastical and functional. The delicate relationship between the natural and the manmade is reflected in the use of contrasting materials.



NACHO CARBONELL

COMBI GLASS PLASTER BUBBLE  
2024

Recycled Beer Bottle Glass,  
Metal Welded Branch, Concrete  
Base, Silicone Cable, Light Fittings  
80 x 60 x 60 cm  
31 1/2 x 23 5/8 x 23 5/8 in  
Unique

➔ MORE OF THIS WORK

Through this sculptural lamp, Nacho Carbonell is asserting his desire to emancipate himself from his earlier creations and experiment with a slower and more mature form of art. *Combi Glass Plaster Bubble* is an organic and colourful piece composed of a unique and subtle blend of ceramics and different recycled glass objects celebrating both the mistakes and triumphs inherent in the creative process. The mushroom-shaped structure rests on a base of traditional concrete and metal infused together, representing a notion of equilibrium. This piece perfectly illustrates Carbonell's departure and exploration into themes of memory, texture and materiality.







NACHO CARBONELL

CONCRETE BASE TABLE LAMP  
2023

Metal Mesh with Paverpol,  
Pigments and Acrylic Paint, Metal  
Welded Branch, Concrete Base,  
Silicone Cable, Light Fittings  
90 x 54 x 60 cm  
35 3/8 x 21 1/4 x 23 5/8 in  
Unique

The *Table Lamp* series reflects Nacho Carbonell's fascination with living organisms, with works resembling hybrid forms that merge organic and mineral elements. This work features a distinctive bluish colour, differentiating it from the other works in the series. The sculpture combines tubular, cubic, angular and organic shapes, reflecting an architectural awareness brought to the artist's exploration of organic form.

➔ MORE OF THIS WORK



## NACHO CARBONELL

PAPER SQUETCH

2024

Metal Mesh with Paverpol and  
Pigments and Acrylic Paint, Metal  
Welded Branch, Concrete Base,  
Silicone Cable, Light Fittings  
80 x 70 x 65 cm  
31 1/2 x 27 1/2 x 25 5/8 in  
Unique

Nacho Carbonell's fascination with living organisms and cocoon shapes is exemplified by a new series of small table lamps. In *Paper Squetch*, the artist applies a special type of plaster into a honeycomb textured metal mesh to create dynamic, organic shapes that resemble elements from nature or living creatures. While remaining rooted in his traditional exploration of cocoon formations, the work also exemplifies the artist's transition towards a new, more linear approach.

[➔ MORE OF THIS WORK](#)





## NACHO CARBONELL

CONCRETE BASE TABLE LAMP  
2023

Metal Mesh with Paverpol,  
Pigments and Acrylic Paint, Metal  
Welded Branch, Concrete Base,  
Silicone Cable, Light Fittings  
80 x 58 x 45 cm  
31 1/2 x 22 7/8 x 17 3/4 in  
Unique

[➔ MORE OF THIS WORK](#)

*The Table Lamp* series reflects Nacho Carbonell's fascination with living organisms, from which he draws inspiration. With works resembling hybrid forms that merge organic and mineral elements, the artist brings a stronger architectural awareness to his ongoing exploration of cocoon-like forms, with layers of concrete laid into mesh. The artist considered the idea of a city when taking an architectural approach to these pieces, imagining what can be created and what can be ruined, producing a piece that appears both alive and fossilised.





## NACHO CARBONELL

MESH TABLE LAMP  
2024

Metal Mesh with Paverpol and  
Pigments and Acrylic Paint, Metal  
Welded Branch, Concrete Base,  
Silicone Cable, Light Fittings  
70 x 50 x 45 cm  
27 1/2 x 19 3/4 x 17 3/4 in  
Unique

A new series of small table lamp pieces by Nacho Carbonell sees the continued use of metal mesh – a common technique in the artist's work – but exploring new elements. *Mesh Table Lamp* features an illuminated mesh structure consisting of cubic shapes, standing upon a square concrete block. The architectural awareness that the artist brings to the work reflects his interest in construction and topography.

[➔ MORE OF THIS WORK](#)



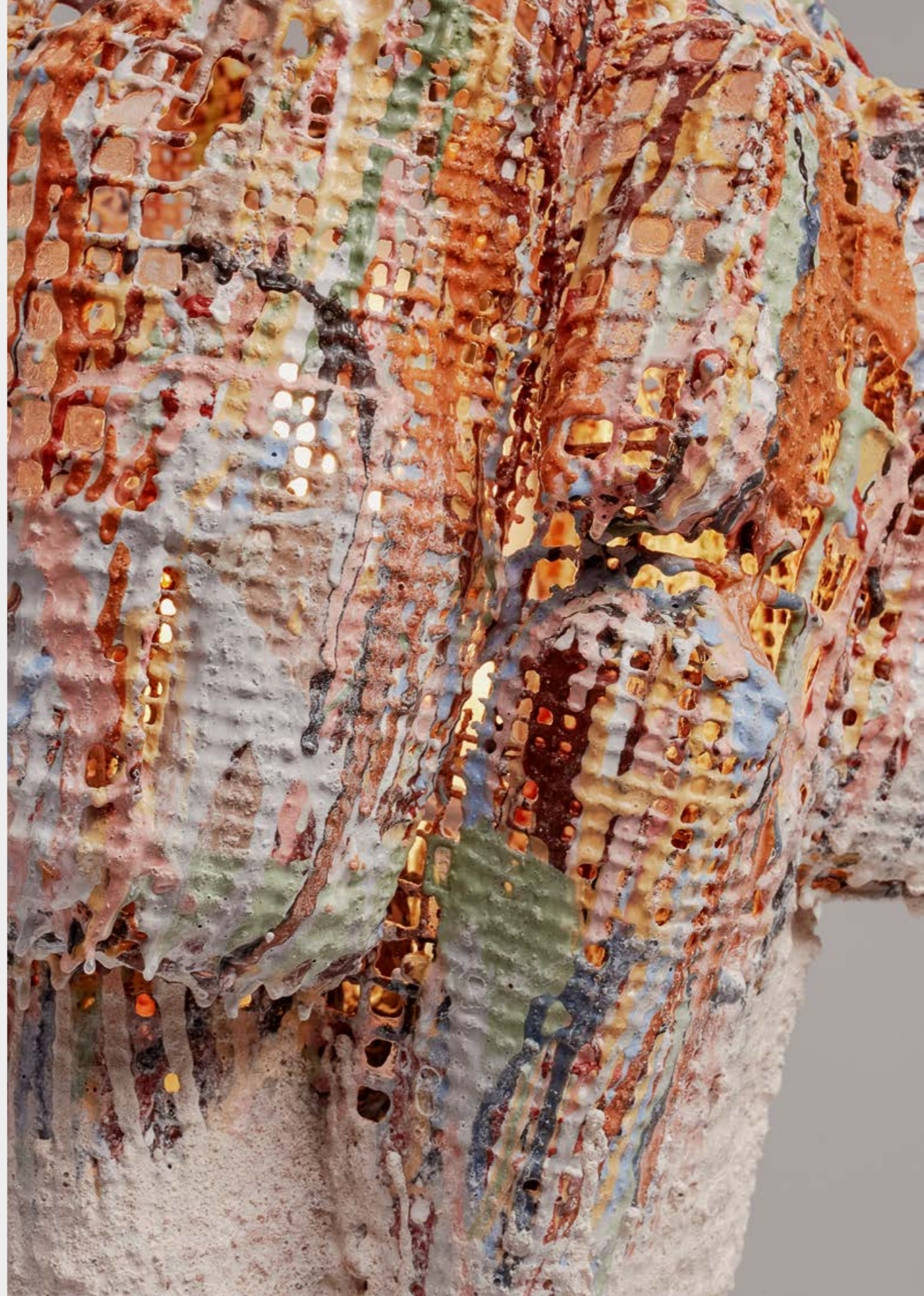
## NACHO CARBONELL

TABLE LAMP  
2023

Metal Mesh with Paverpol,  
Pigments and Acrylic Paint, Metal  
Welded Branch, Concrete Base,  
Silicone Cable, Light Fittings  
70 x 43 x 44 cm  
27 1/2 x 16 7/8 x 17 3/8 in  
Unique

[→ MORE OF THIS WORK](#)

Reflecting Nacho Carbonell's interest in living organisms, the *Table Lamp* series features works resembling hybrid forms that combine organic and mineral elements. In this piece, the artist continues his exploration of cocoon-like shapes from previous series, using similar materials but applying them in a new way. The artist has applied silicone into a metallic honeycomb-textured mesh and created colourful effects through the use of spray and acrylic paint. As in previous pieces, the expressive, organic forms of this lamp create an object that is both fantastical and functional. Carbonell draws attention to the relationship between the natural and manmade worlds through the combined use of materials like wood and metal.



NACHO CARBONELL

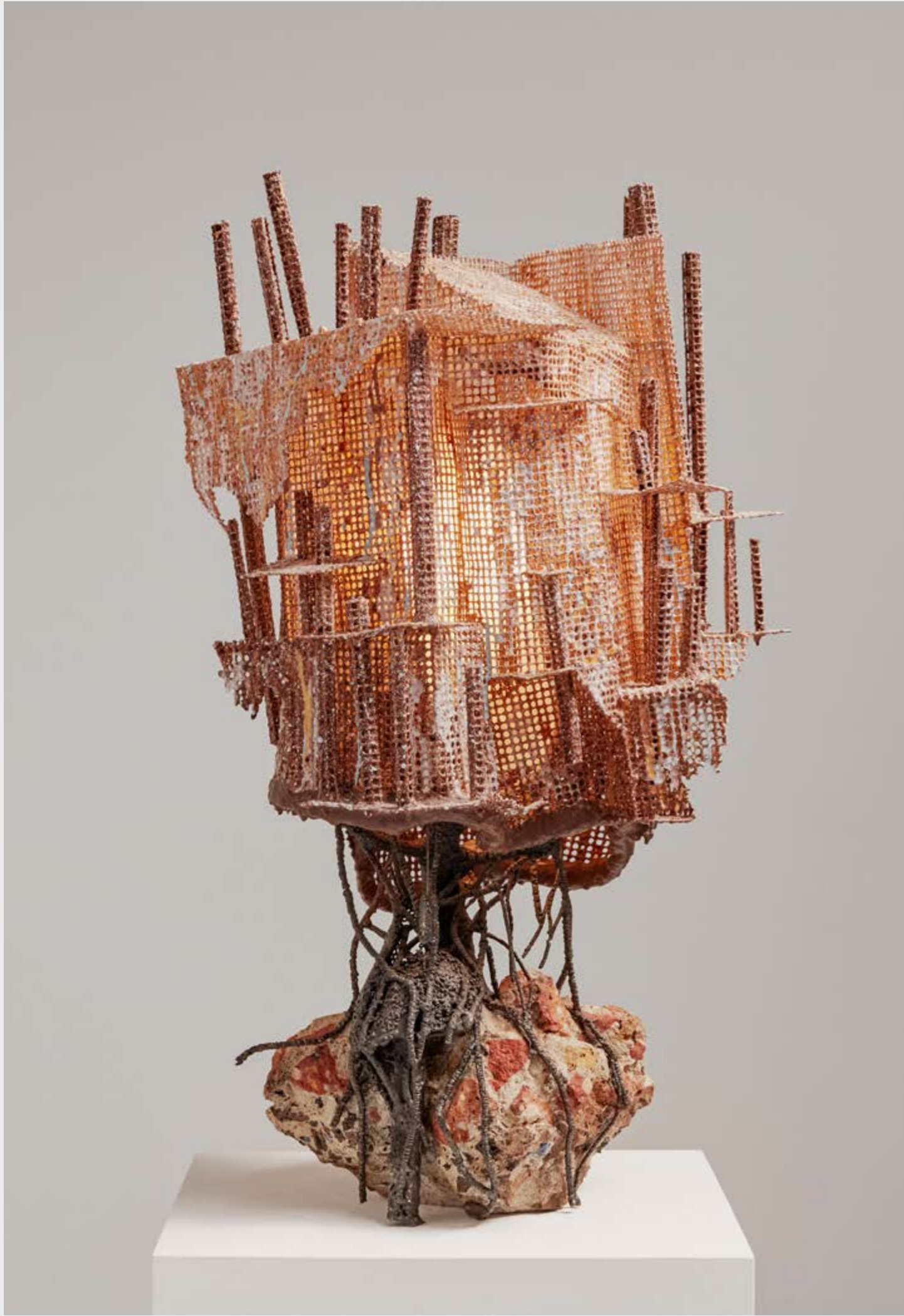
TREE HOUSE TABLE LAMP  
2024

Metal Mesh with Paverpol,  
Pigments and Acrylic Paint, Metal  
Welded Branch, Concrete Base,  
Silicone Cable, Light Fittings  
85 x 69 x 57 cm  
33 1/2 x 27 1/8 x 22 1/2 in  
Unique

*Tree House Table Lamp* features a conglomeration of cubic structures held up by metal branches. The whole piece could resemble a tree, but its boxy structure conveys architectural construction, reflecting a new direction that the artist is taking, expanding from his ongoing exploration of cocoons. This duality sees the artist explore the relationship between the natural and manmade works.

➔ MORE OF THIS WORK





**NACHO CARBONELL**

CONCRETE BASE TABLE LAMP  
2023

Metal Mesh with Paverpol, Pigments  
and Acrylic Paint, Metal Welded  
Branch, Concrete Base, Silicone  
Cable, Light Fittings  
85 x 55 x 50 cm  
33 1/2 x 21 5/8 x 19 3/4 in  
Unique

This piece belongs to the *Table Lamp* series and reflects Nacho Carbonell's fascination with living organisms, with works resembling hybrid forms that merge organic and mineral elements. The work sees a stronger architectural awareness brought to the artist's ongoing exploration of cocoon-like forms, with layers of concrete laid into mesh. The lamp combines tubular, cubic, angular and organic shapes, with the fusion of materials creating a sense of duality between the natural and man-made worlds.

[➔ MORE OF THIS WORK](#)



NACHO CARBONELL

CONCRETE BASE TABLE LAMP  
2023

Metal Mesh with Paverpol and  
Pigments and Acrylic Paint, Metal  
Welded Branch, Concrete Base,  
Silicone Cable, Light Fittings  
74 x 45 x 38 cm  
29 1/8 x 17 3/4 x 15 in  
Unique

A new *Table Lamp* series reflects Nacho Carbonell's fascination with living organisms, with works resembling hybrid forms that merge organic and mineral elements. Here, the artist brings an architectural awareness to his exploration of cocoon-like forms, with layers of concrete laid into mesh, producing a sculpture that combines tubular, cubic, angular and organic shapes. The artist considered the idea of a city when taking an architectural approach to these pieces, imagining what can be created and what can be ruined, creating a piece that appears both alive and fossilised.

[➔ MORE OF THIS WORK](#)



NACHO CARBONELL

RAINBOW 2.0  
2024

Broken Blown Glass Bubbles,  
Metal Welded Branch, Stone Base,  
Silicone Cable, Light Fittings  
TBC  
Unique

Through sculptural pieces resembling organic shapes, Nacho Carbonell explores various formations of colour, light and materiality. *Rainbow 2.0* features broken glass welded together in an arc shape, creating the illusion of a rainbow. The artist's inspiration for this piece ranged from the demolition of a city landscape to the stained-glass windows and mosaics of old churches.

➔ MORE OF THIS WORK







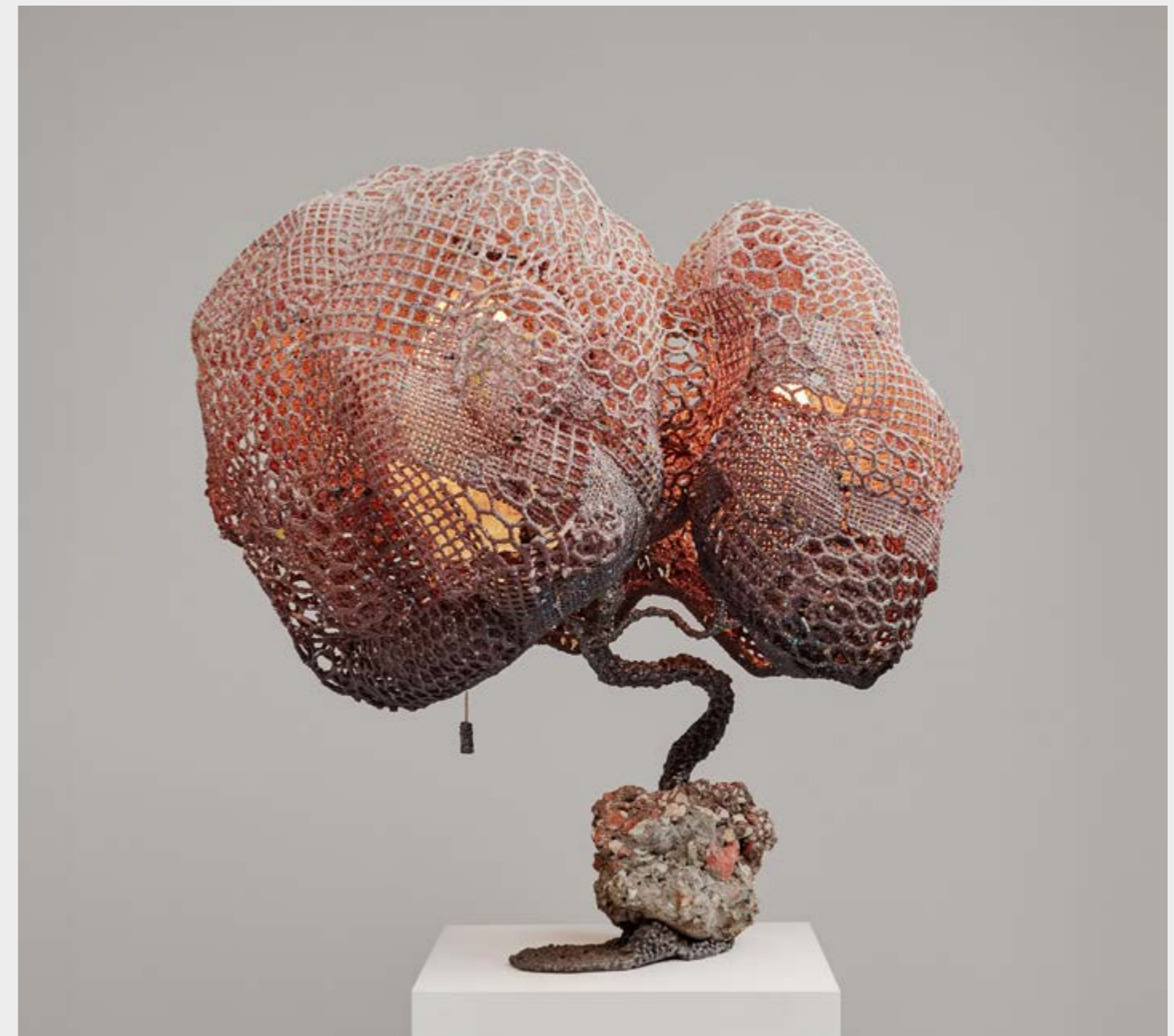
## NACHO CARBONELL

RISING STONE TABLE LAMP  
2024

Metal Mesh with Paverpol,  
Pigments and Acrylic Paint, Metal  
Welded Branch, Concrete Base,  
Silicone Cable, Light Fittings  
92 x 90 x 70 cm  
36 1/4 x 35 3/8 x 27 1/2 in  
Unique

Part of a new series of small table lamps, *Rising Stone Table Lamp* is comprised of organic shaped semi-transparent cocoons varied in form, fitted by a loosely structured mesh, illuminated from the inside so that the light diffuses through, producing a natural warm light. The cocoon-like formation is recognisable from the artist's wider work, while the composition of the work reflects the artist's transition towards new approaches.

[➔ MORE OF THIS WORK](#)





*"I like to see objects as living organisms, imagine them coming alive and being able to surprise you with their behaviour. I want to create objects with my hands; then I can give them my personality. I turn them into communicative objects that can arouse one's feelings and imagination. In short, what I want to create are objects with a fictional or fantasy element that allow you to escape everyday life."*

NACHO CARBONELL

CONFIGURATION OF AN OBJECT  
2024

Plaster  
Compositions of 80 pieces, each:  
30 x 30 x 35 cm  
11 3/4 x 11 3/4 x 13 3/4 in  
Unique

The playful collection of clay objects titled *Configuration of an Object* reflects Nacho Carbonell's experimentation with new materials. Through the therapeutic process of molding clay with his hands, the artist creates small-scale models of lamps, room dividers and other sculptural pieces that echo his wider formal language. Arranged together on a single podium, they create a landscape of maquettes that embody the artist's process of thinking, seeing and making during this new phase of his creative journey.

➔ MORE OF THIS WORK





## NACHO CARBONELL

GEARBOX TABLE LAMP  
2024

Metal Mesh with Paverpol,  
Pigments and Acrylic Paint, Metal  
Welded Branch, Concrete Base,  
Silicone Cable, Light Fittings  
92 x 75 x 66 cm  
36 1/4 x 29 1/2 x 26 in  
Unique

[➔ MORE OF THIS WORK](#)

*Gearbox Table Lamp* features layers of metal mesh structures stacked on top of each other, together forming an organic shape, and emerging from a concrete base. The work reflects the artist's interest in construction and cartography.



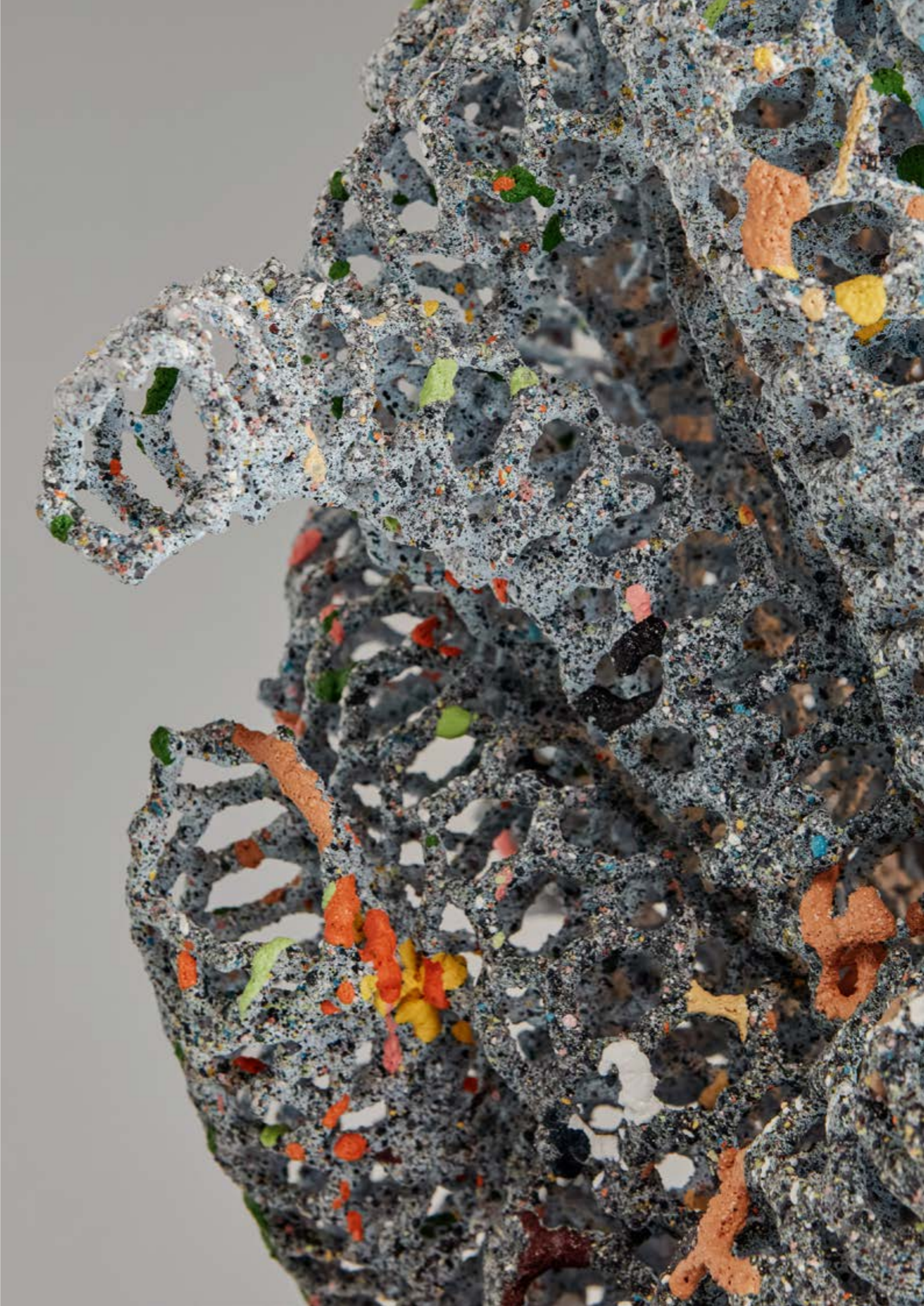
NACHO CARBONELL

CORAL TABLE LAMP  
2024

Metal Mesh with Paverpol,  
Pigments and Acrylic Paint, Metal  
Welded Branch, Concrete Base,  
Silicone Cable, Light Fittings  
82 x 80 x 55 cm  
32 1/4 x 31 1/2 x 21 5/8 in  
Unique

*Coral Table Lamp* sees the artist employ the metal mesh  
bubble commonly found in his work but exploring it further  
by incorporating new elements. This piece features a coral-  
like skeleton, with brightly coloured elements emerging from  
the overall darkness of the piece. It reflects Nacho Carbonell's  
interest in plants, landscape and underwater life.

➔ MORE OF THIS WORK



NACHO CARBONELL

COMBI WOOD AND METAL BUBBLE  
2024

Metal Welded Branch, Wood,  
Concrete Base, Silicone Cable,  
Light Fittings  
80 x 60 x 46 cm  
31 1/2 x 23 5/8 x 18 1/8 in  
Unique

*Combi Wood and Metal Bubble* is a testament to Nacho Carbonell's exploration of hybridisation and the duality of materials. Carbonell combines wood and metal juxtaposed to highlight the relationship between natural and artificial materials. At the heart of this work, which merges organic and mineral elements, is a hidden illuminated tree that the spectators can discover. This piece is structured around a wooden bubble that the artist chopped in half and paired with metal, encapsulating the fusion of manmade and natural elements that is central to his work.

➔ MORE OF THIS WORK





## NACHO CARBONELL

MESH MUSHROOM SELVE  
2024

Metal Welded Lamp Shade  
and Structure, Concrete Base,  
Silicone Cable, Light Fittings  
61 x 82 x 17 cm  
24 x 32 1/4 x 6 3/4 in  
Unique

In this organic sculpture collection, Nacho Carbonell emphasises the passage of time, presenting objects as relics holding secrets waiting to be discovered. *Mesh Mushroom Selve* is a mushroom-shaped wall sculpture composed of a blend of stone and black mesh and crafted with interactive doors and shelves that invite spectators to discover elements hidden inside. The sculpture evokes a fossil-like aesthetic with curves and ammonite patterns. Carbonell plays with the concept of revelation and concealment, embodying a dialogue between the interior and exterior.

[➔ MORE OF THIS WORK](#)





## NACHO CARBONELL

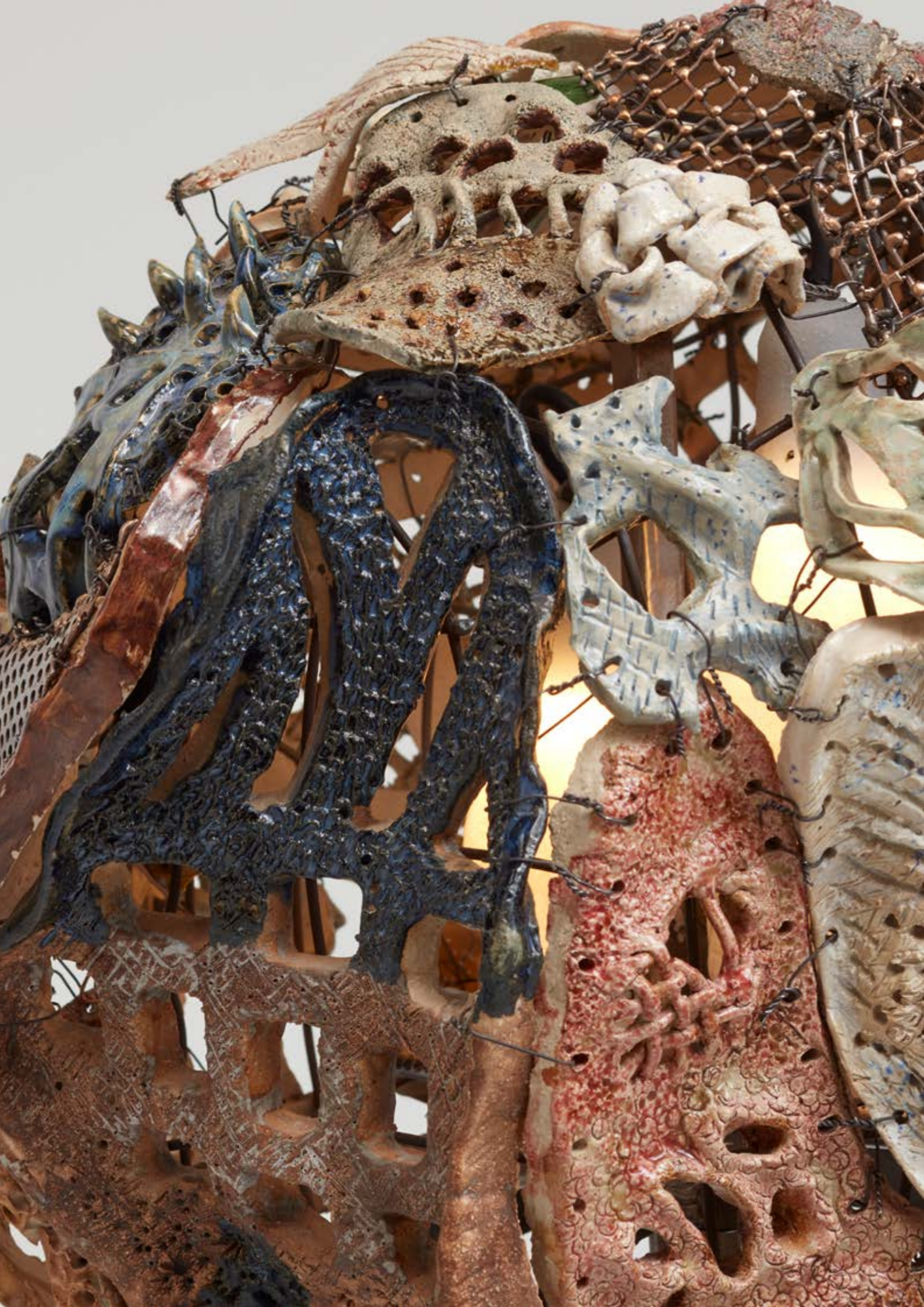
TEMPLE TABLE LAMP  
2024

Metal Mesh with Paverpol and  
Pigments and Acrylic Paint, Metal  
Welded Branch, Concrete Base,  
Silicone Cable, Light Fittings  
90 x 54 x 60 cm  
35 3/8 x 21 1/4 x 23 5/8 in  
Unique

[→ MORE OF THIS WORK](#)

*Temple Table Lamp* is a sculpture by Nacho Carbonell that sees the artist go further than the metal mesh bubble ubiquitous in his work, incorporating stalactite elements. The organic, hybrid forms of the work are inspired by plants, landscape, topography, construction and underwater life. The mesh structure is illuminated from the inside, so that a natural, warm light diffuses through it.





## NACHO CARBONELL

CERAMIC TABLE LAMP  
2023

Ceramic, Metal Structure,  
Light Fittings, Silicon Cable  
75 x 55 x 65 cm  
29 1/2 x 21 5/8 x 25 5/8 in  
Unique

Spanish artist Nacho Carbonell is known for his tactile approach to sculpture that plays with textures, experimental techniques and explores the relationship between the natural and manmade worlds. *Ceramic Table Lamp* reflects the artist's fascination with living organisms, featuring various ceramic elements amassed together to create a hybrid, organic form supported by a metal core. The expressive shape of the sculpture renders the lamp both fantastical and functional.

[➔ MORE OF THIS WORK](#)



NACHO CARBONELL

BROKEN GLASS MUSHROOM  
2024

Broken Blown Glass Bubbles,  
Metal Welded Branch, Stone Base,  
Silicone Cable, Light Fittings  
75 x 80 x 56 cm  
29 1/2 x 31 1/2 x 22 in  
Unique

This sculptural light created by Nacho Carbonell demonstrates his desire to escape from his precedent works and explore the next phase of his career. Through the mushroom-shaped sculpture *Broken Glass Mushroom*, Nacho Carbonell explores and appropriates the wall, a support he had not previously exploited to any great extent. Evoking a growing tree, *Broken Glass Mushroom* is made up of pieces of recycled bottle glass mainly found locally with which Carbonell plays and composes, changing colour and switching between light and dark.

[➔ MORE OF THIS WORK](#)



NACHO CARBONELL

GLASS BROKEN LIGHT FOUNTAIN  
2024

Broken Blown Glass Pieces, Metal  
Welded Branch,  
Silicone Cable, Light Fittings  
150 x 35.5 x 35.5 cm  
59 x 14 x 14 in  
Unique

*Glass Broken Light Fountain*, a sculptural light created by Nacho Carbonell, explores and appropriates the wall – a support he had not previously exploited to any great extent. Made up of pieces of recycled bottle glass mainly found locally with which Carbonell plays and composes, the blue colour of the glass is a nod to the seaside town in which Carbonell spent his childhood and finds his inspiration.

➔ MORE OF THIS WORK



NACHO CARBONELL

CERAMIC STANDING LAMP  
2023

Ceramic, Metal Structure,  
Light Fittings, Silicon Cable  
172 x 68 x 70 cm  
67 3/4 x 26 3/4 x 27 1/2 in  
Unique

This sculptural standing lamp is characterised by vibrant colours, combining thick ceramics, glass and metal pieces. *Ceramic Standing Lamp* encapsulates Carbonell's experimental approach to materials, blending different textures and forms to create a cohesive, yet dynamic whole. The use of clay in this sculpture, a material typically absent from his work, brings forth an earthy, bendy and sensual aesthetic to the composition.

[➔ MORE OF THIS WORK](#)



NACHO CARBONELL

BALLS TREE 2  
2024

Metal Mesh with Paverpol  
and Pigments, Metal Welded  
Branch, Concrete Base,  
Silicone Cable, Light Fittings  
200 x 156 x 102 cm  
78 3/4 x 61 3/8 x 40 1/8 in  
Unique

*Balls Tree 2* features metal welded branches emerging from a concrete base, resembling a tree. Nacho Carbonell applies marble powder mix into the metal mesh to create the impression of leaves. The shimmering texture of the leaves creates an otherworldly experience for the viewer, seeming to both imitate and transcend the natural world. Carbonell's ongoing exploration of trees is inspired by the multitude of forms in which these organisms grow.

[➔ MORE OF THIS WORK](#)







## NACHO CARBONELL

CERAMIC STANDING LAMP  
2023

Ceramic, Metal Structure,  
Light Fittings, Silicon Cable  
165 x 80 x 60 cm  
65 x 31 1/2 x 23 5/8 in  
Unique

[➔ MORE OF THIS WORK](#)

Nacho Carbonell's artistic vision is an emotional reaction to his own past, explored through experimental forms and materials. Shaped through environmental conditioning, each artwork becomes a self-portrait of Carbonell himself. His organic light sculptures are adapted to survive in their urban environments, mirroring Carbonell's move from Spain to the Netherlands which led to his own adaptations as an artist.





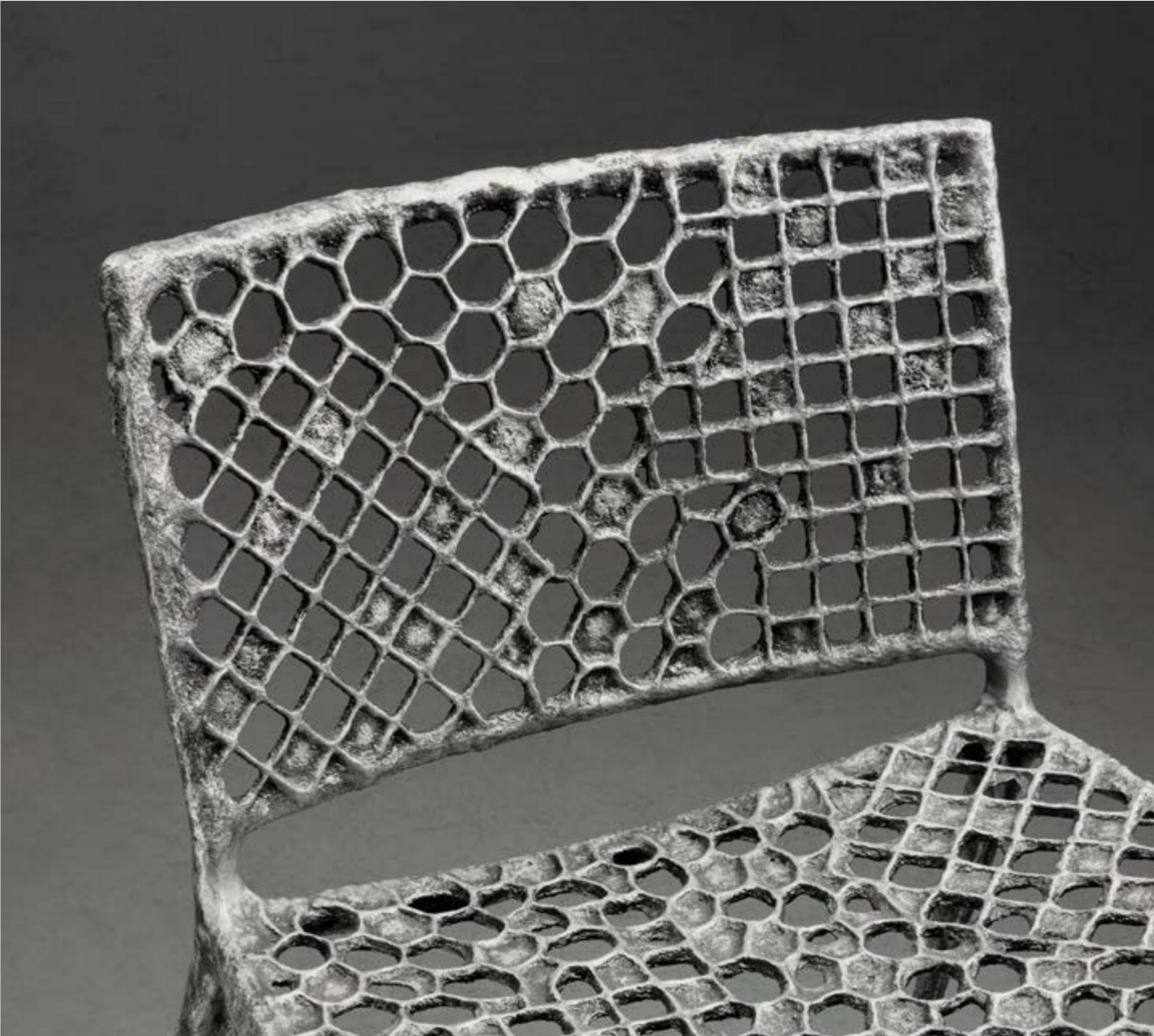
**NACHO CARBONELL**

NET CHAIR  
2022

Aluminium  
73 x 59 x 53 cm  
28 3/4 x 23 1/4 x 20 7/8 in  
Edition of 10

Nacho Carbonell sees objects as living, communicative organisms that arouse feelings and imagination. *Net Chair* reflects the Spanish artist's interest in the function of the chair beyond just providing a place to sit, instead exploring wider notions of rest and relaxation. This aluminium piece features a varieties of square, diamond and circular shapes forged within its back and seat, creating a blend of the geometric and the organic.

[➔ MORE OF THIS WORK](#)





NACHO CARBONELL

Born in Spain in 1980, Nacho Carbonell is now based in Eindhoven, the Netherlands, where he works alongside his team of designers and artists in an open warehouse. He graduated in 2003 from Cardenal Herrera University in Spain and went on to study at the Design Academy Eindhoven. Upon graduating, he created collections such as *Evolution* in 2009, which won him a nomination for Beazley Design of the Year from the Design Museum in London. In 2013, he won Designer of the Year in his home country, Spain. He started collaborating with Carpenters Workshop Gallery in 2015 and has since become one of the leading artists that the gallery represents worldwide.

Carbonell is known for his tactile approach to sculpture which plays with textures, experimental techniques and natural materials. His approach is unique, seeing objects as ‘living organisms’ that come alive and surprise you with their behaviour. For Carbonell, forming a relationship with his work is integral – he creates objects with his hands in order to impart his personality to them. He describes his pieces as “communicative objects that arouse one’s feelings and imagination... that allows you to escape everyday life”. Carbonell’s designs are made using locally sourced materials he finds near his studio in Eindhoven.

EXHIBITIONS

**2024**  
Denver Art Museum – *Biophilia*, USA

**2022**  
Design Museum – *Objects of Desire: Surrealism and Design 1924 – Today*, London

**2021**  
Dior – *Superblue Miami*, USA

**2020**  
Cube Design Museum – *Time Matters*, Netherlands  
The Israel Museum – *Seated in Seclusion: Bratslav Hasidim and Contemporary Design*, Israel

**2019**  
Corning Museum of Glass – *New Glass Now*, New York

MUSEUMS

Groninger Museum, Netherlands  
2121 Museum, Japan  
MINT Museum, Charlotte, USA  
Denver Art Museum, Denver, USA  
Cincinnati Art Museum, USA



